

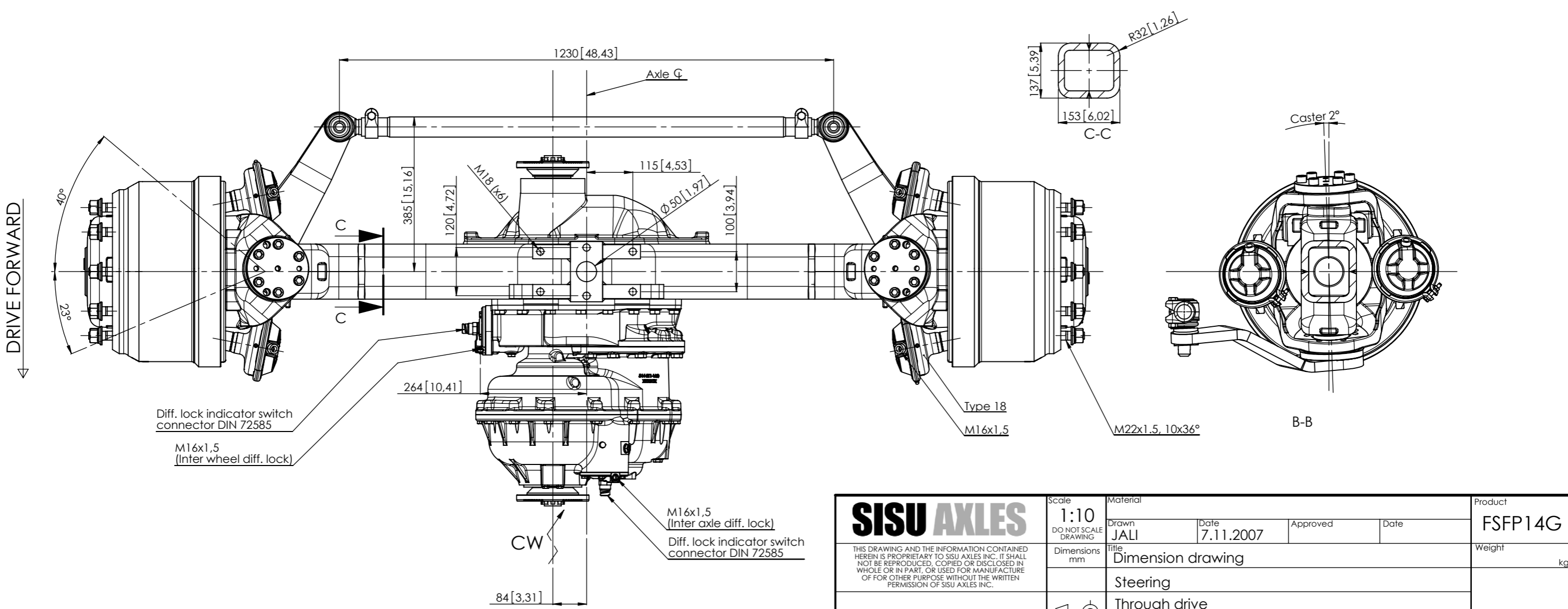
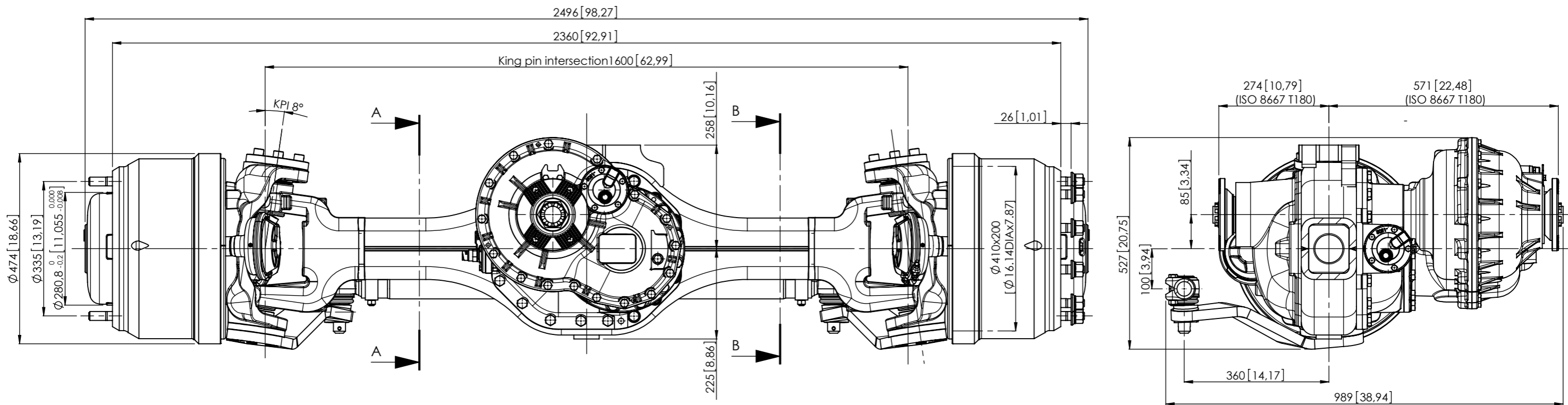
HIGH SPEED, (TRUCK) DRIVE STEER AXLE, FSFP14G

GAWR	14 000 kg [31,000 Lb.]
GCWR	75 000 kg [165,000 Lb.]
Axle Type	Spiral Bevel Center Differential Planetary Wheel End Reduction, 5-planet Carrier Torque proportional differential 31.8/68.2
Brakes	
Type	Wedge Duplex
Size	Ø410 mm[16,1 Inch] x 200 mm [7,9 Inch]
Chamber	18 Square Inch
Certification	FMVSS 121
Steering	
KPI	8°
Caster	2°
Camber	0°
Turn angle	40°
Housing	Fabricated Steel, Cross Section 153 mm [6,0 Inch] Height x 137 mm [5,4 Inch] Width, Center Bowl
Wheel End	10-studs on 335 mm [13,2 Inch] BC, 280.8 mm [11,06 Inch] Pilot Diameter. Minimum Wheel Size 20 Inch
Wheel offset (optimal)	Inset 130...165 mm [5.1...6.5 Inch]
Drive Flange	ISO8667-T180
Final Drive Ratios	5.56, 6.36 and 7.01
Tracks Available (Over wheel mounting faces)	2360 mm [92.9 Inch] or 2580 mm [101.6 Inch]
Lubrication	
Type	API GL-5
Capacity (estimated)	Total 27 liters [57 pints]
Weight-Dry (for Track 2360 mm)	1020 kg [2,349 Lb.]

All ratings are nominal. Actual capacities determined based upon review of application data by Sisu Axles Inc.

OPTIONS:	Spring Seats	Wheel Stud Length
	Wheel Nuts	Brake Chambers
	Input / Output drive flanges	Axle Differential Lock
	ABS Provision	Steering Arm Configurations
	CTI Provision	Top Coating
	Oil Lubrication pump	

Other options may be available. Contact Sisu Axles sales for more information.



REV.	DESCRIPTION	NIAH	14.04.2010	JALI	12.05.2010
A	Modeled and redrawn	CHANGED	CHANGED DATE	APPROVED	APPROVED DATE

SISU AXLES <small>THIS DRAWING AND THE INFORMATION CONTAINED HEREIN IS PROPRIETARY TO SISU AXLES INC. IT SHALL NOT BE REPRODUCED, COPIED OR DISCLOSED IN WHOLE OR IN PART, OR USED FOR MANUFACTURE OF FOR OTHER PURPOSE WITHOUT THE WRITTEN PERMISSION OF SISU AXLES INC.</small>	Scale	Material		Product	
	1:10 DO NOT SCALE DRAWING	Drawn JALI	Date 7.11.2007	Approved	Date
	Dimensions mm	Title Dimension drawing		Weight kg	
		Steering			
		Through drive			
		Drawing n:o		Rev.	Sheet
		M541-050-0004		A	1/1
				Drawing size	
				A3	