

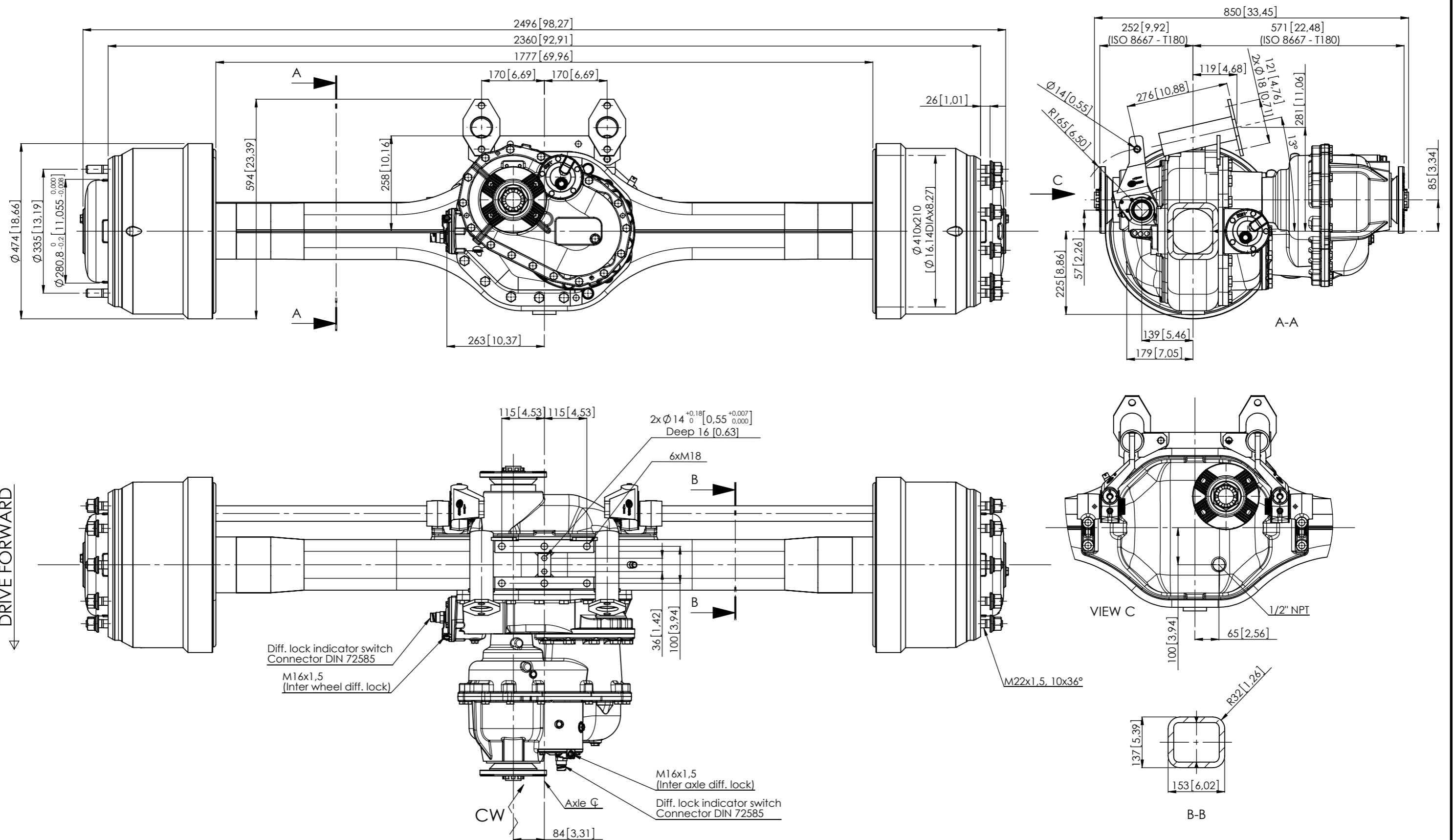
HIGH SPEED, (TRUCK) TANDEM RIGID DRIVE AXLE, FR2P28S

GAWR	28 000 kg [62,000 Lb.]
GCWR	150 000 kg [330,000 Lb.]
Axle Type	Spiral Bevel Center Differential Planetary Wheel End Reduction, 5-planet Carrier
Brakes	
Type	Drum, S-cam
Size	Ø410 mm [16,1 Inch] x 210 mm [8,3 Inch] Width
Slack Adjuster	Automatic, 165 mm [6.5 Inch] Length
Chamber	30 Square Inch
Certification	FMVSS 121
Housing	Fabricated Steel, Cross Section 153 mm Height [6,0 Inch] x 137 mm [5,4 Inch] Width, Center Bowl
Wheel End	10-studs on 335 mm [13,2 Inch] BC, 280.8 mm [11,1 Inch] Pilot Diameter. Minimum Wheel Size 20 Inch Single Tire Mounting
Wheel offset (Optimal)	Inset 130...165 mm [5.1...6.5 Inch]
Drive Flange	ISO8667-T180
Final Drive Ratios	4.65, 5.56, 6.36, 7.01 and 8.79
Tracks Available (Over Wheel Mounting Faces)	2360 mm [92.9 Inch]
Lubrication	
Type	API GL-5
Capacity (FRDP)	Total 21 liters [45 pints]
Capacity (FRMP)	Total 27 liters [57 pints]
Weight-Dry	
FRDP	790 kg [1,742 Lb.]
FRMP	890 kg [1,962 Lb.]

All ratings are nominal. Actual capacities determined based upon review of application data by Sisu Axles Inc.

OPTIONS:	Spring Seats	Wheel Stud Length
	Wheel Nuts	Brake Chambers
	Input / Output Drive Flanges	Axle differential Lock
	ABS Provision	Slack Adjuster
	Top Coating	CTI Provision

Other options may be available. Contact Sisu Axles sales for more information.



SISU AXLES <small>THIS DRAWING AND THE INFORMATION CONTAINED HEREIN IS PROPRIETARY TO SISU AXLES INC. IT SHALL NOT BE REPRODUCED, COPIED OR DISCLOSED IN WHOLE OR IN PART, OR USED FOR MANUFACTURE OF FOR OTHER PURPOSE WITHOUT THE WRITTEN PERMISSION OF SISU AXLES INC.</small>		Scale	Material		Product	
		1:10 DO NOT SCALE DRAWING	Drawn JALI	Date 24.04.2007	Approved	Date
THIS DRAWING AND THE INFORMATION CONTAINED HEREIN IS PROPRIETARY TO SISU AXLES INC. IT SHALL NOT BE REPRODUCED, COPIED OR DISCLOSED IN WHOLE OR IN PART, OR USED FOR MANUFACTURE OF FOR OTHER PURPOSE WITHOUT THE WRITTEN PERMISSION OF SISU AXLES INC.		Dimensions mm	Title		Weight	
			Dimension drawing		kg	
		Rigid		Rev. Sheet Drawing size A 1/1 A3		
		Through drive				
Drawing n:o M543-036-0180						

A	Modeled and redrawn	NIAH	23.04.2010	JALI	26.05.2010
REV.	DESCRIPTION	CHANGED	CHANGED DATE	APPROVED	APPROVED DATE

