

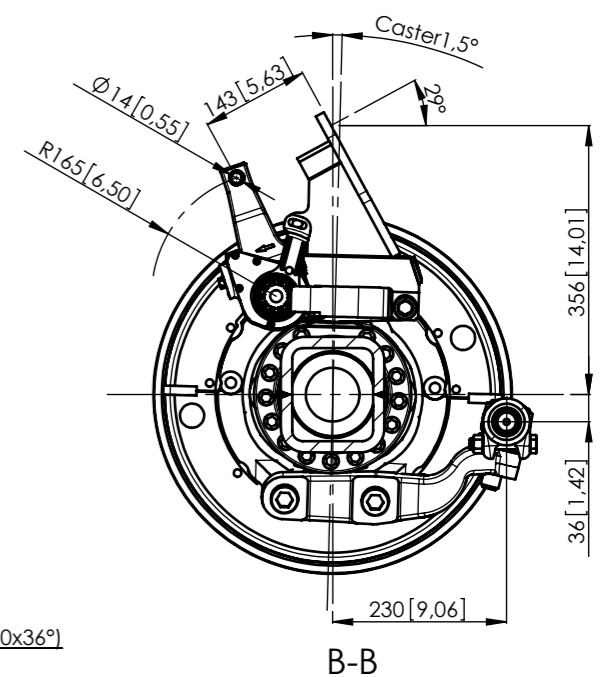
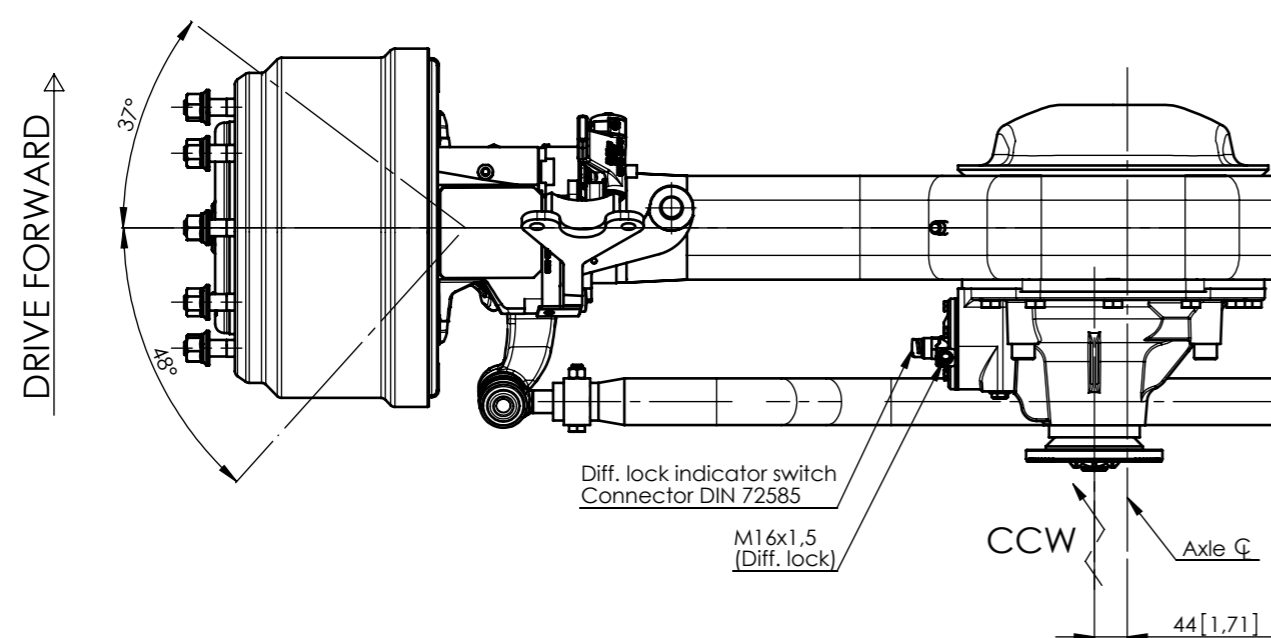
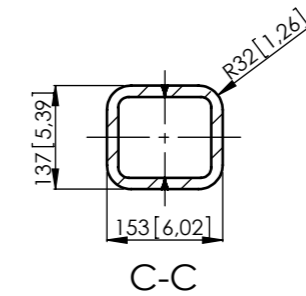
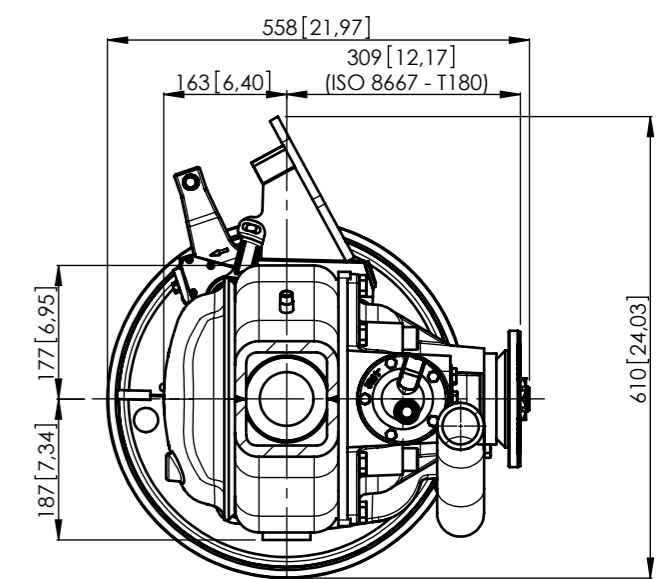
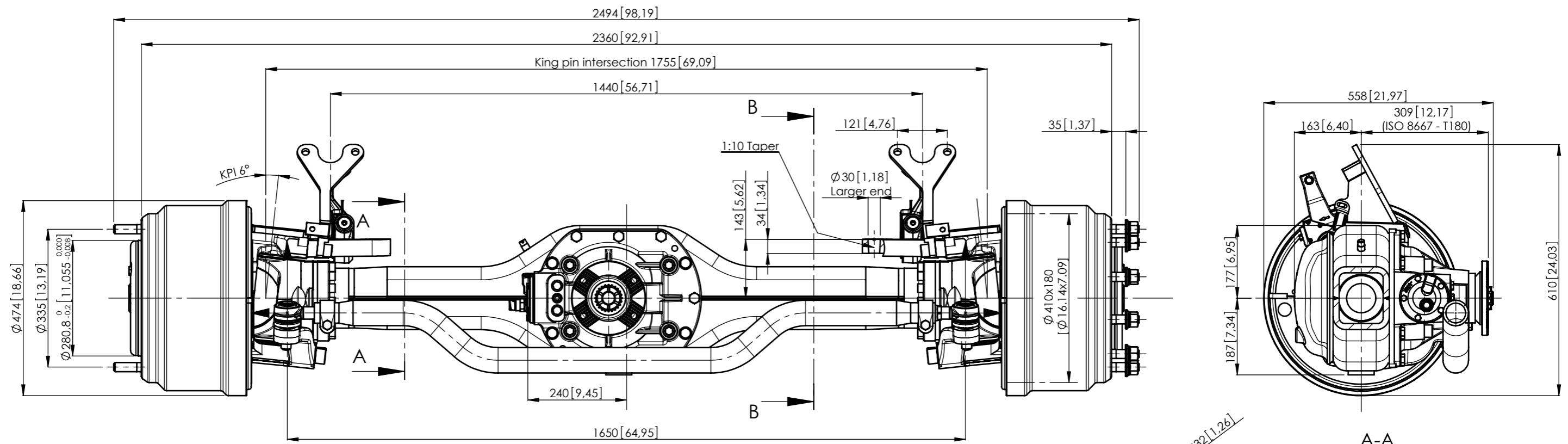
**HIGH SPEED, (TRUCK) DRIVE STEER TANDEM AXLE, FS2P20S**

<b>GAWR</b>	20 000 kg [44,000 Lb.]
<b>GCWR</b>	40 000 kg [88,000 Lb.]
<b>Axle Type</b>	Spiral Bevel Center Differential Planetary Wheel End Reduction, 5-planet Carrier
<b>Brakes</b>	
Type	Drum, S-cam
Size	Ø410 mm [16,1 Inch] x 180 mm [7,1 Inch] Width
Slack Adjuster	Automatic, 165 mm [6.5 Inch] Length
Chamber	30 Square Inch
Certification	FMVSS 121
<b>Steering</b>	
KPI	6°
Caster	1.5°
Camber	0°
Turn angle	48°
<b>Housing</b>	Fabricated Steel, Cross Section 153 mm [6,0 Inch] Height x 137 mm [5,4 Inch] Width, Center Bowl
<b>Wheel End</b>	10-studs on 335 mm [13,2 Inch] BC, 280.8 mm [11,06 Inch] Pilot Diameter. Minimum Wheel Size 20 Inch
<b>Wheel offset</b> (optimal)	Inset 90...165 mm [3.5...6.5 Inch]
<b>Drive Flange</b>	ISO8667-T150, ISO8667-T180 (Input FSMP10S)
<b>Final Drive Ratios</b>	4.63, 5.54 6.36, and 7.01
<b>Tracks Available</b> (Over wheel mounting faces)	2360 mm [92.9 Inch]
<b>Lubrication</b>	
Type	API GL-5
Capacity FSDP10S	Total 13 liters [27 pints]
Capacity FSMP10S	Total 18 liters [38 pints]
<b>Weight-Dry</b>	
FSDP10S	740 kg [1,631 Lb.]
FSMP10S	865 kg [1,907 Lb.]

All ratings are nominal. Actual capacities determined based upon review of application data by Sisu Axles Inc.

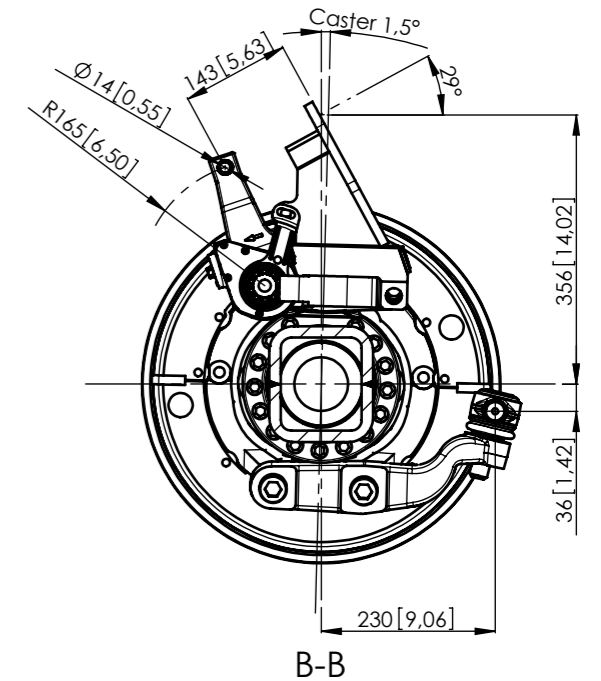
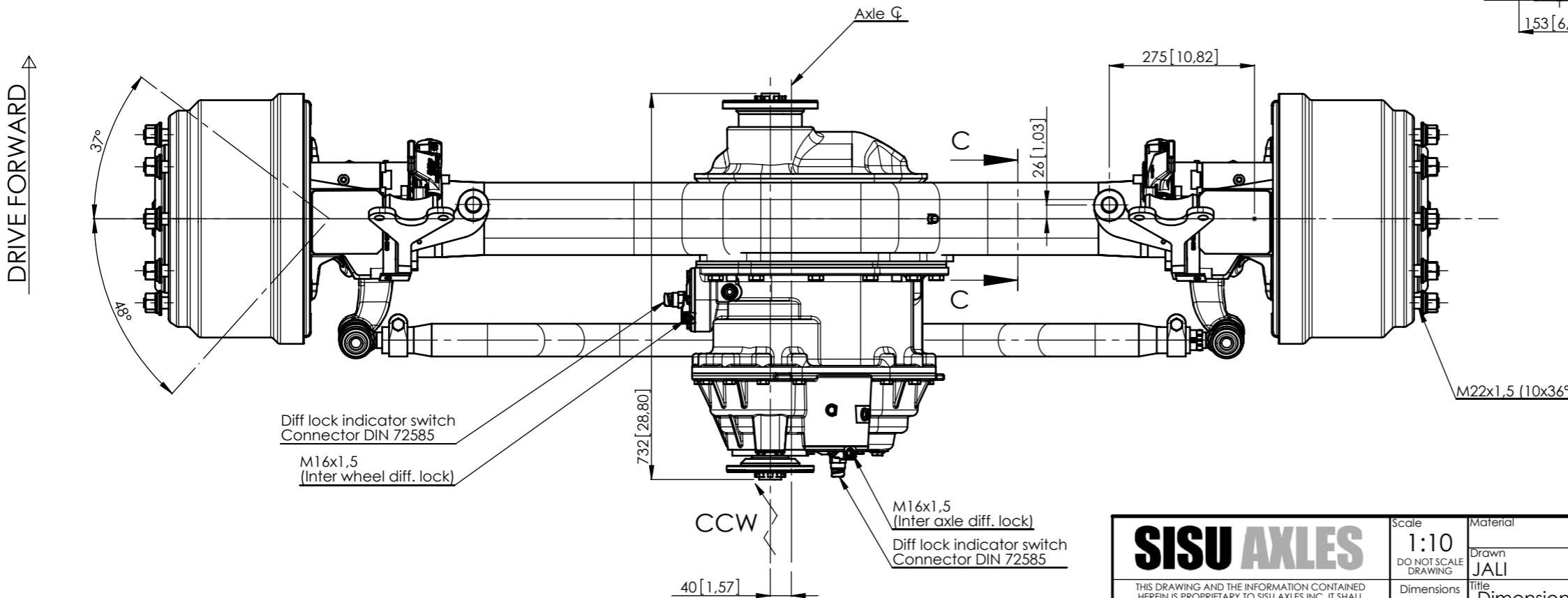
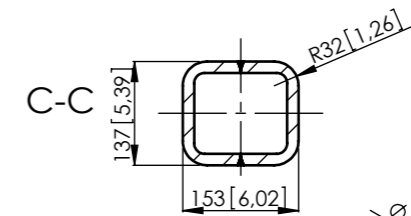
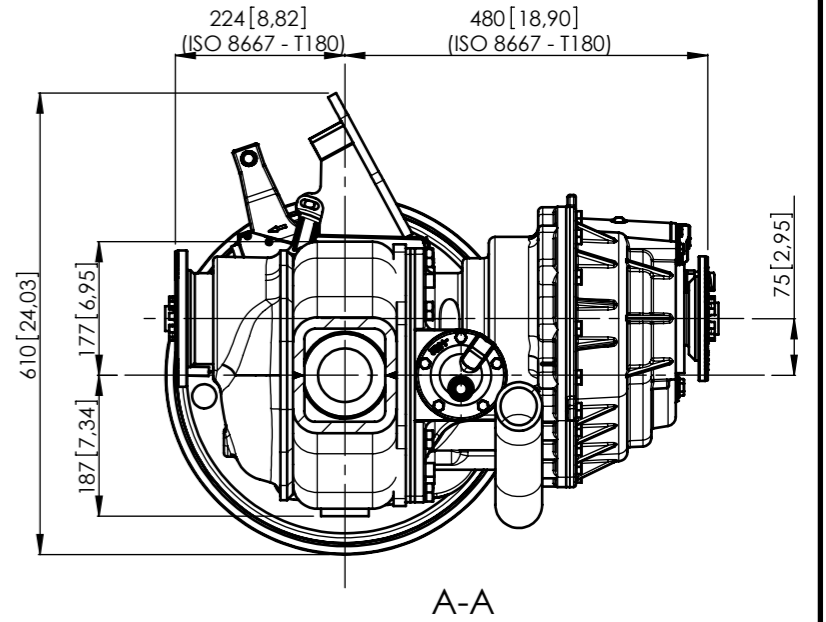
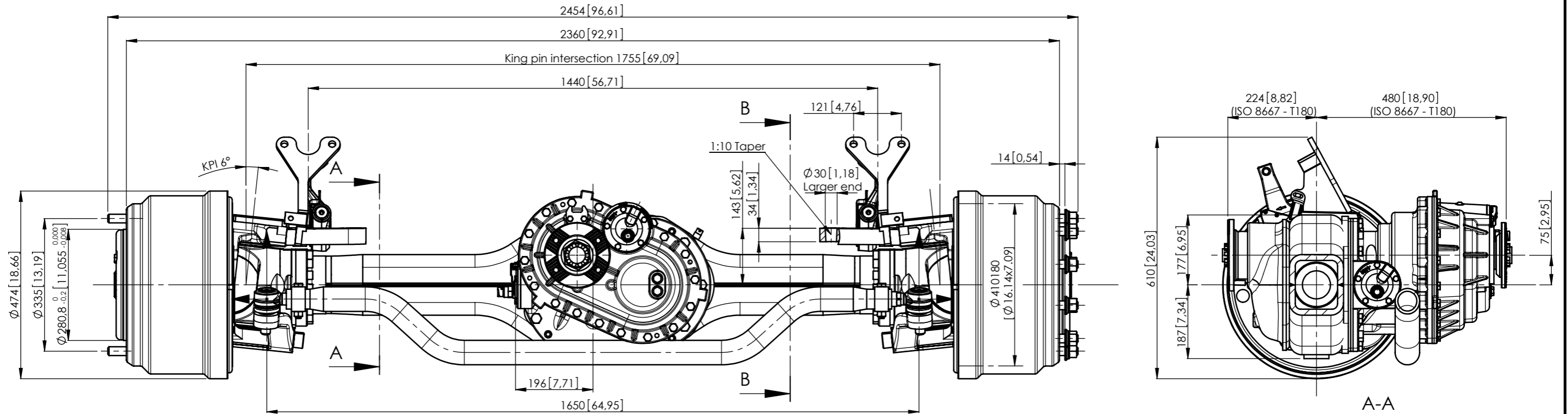
<b>OPTIONS:</b>	Spring Seats	Wheel Stud Length
	Wheel Nuts	Brake Chambers
	Axle Differential Lock	Input / Output Drive flanges
	ABS Provision	Steering Arm Configurations
	CTI Provision	Top Coating
	Slack Adjuster Type	Caster angle

Other options may be available. Contact Sisu Axles sales for more information.



M22x1,5 (10x36°)

<b>SISU AXLES</b> <small>THIS DRAWING AND THE INFORMATION CONTAINED          HEREIN IS PROPRIETARY TO SISU AXLES INC. IT SHALL          NOT BE REPRODUCED, COPIED OR DISCLOSED IN          WHOLE OR IN PART, OR USED FOR MANUFACTURE          OF FOR OTHER PURPOSE WITHOUT THE WRITTEN          PERMISSION OF SISU AXLES INC.</small>		Scale 1:10 DO NOT SCALE DRAWING	Material	Product						
		Dimensions mm	Drawn JALI Date 25.4.2007 Approved Date Title Dimension drawing	Weight	kg					
			Steering Drive Drawing n:o	Rev. A	Sheet 1/1 Drawing size A3					
A	Modeled and redrawn	NIAH	01.04.2010	JALI	26.05.2010	M541-018-0032				
REV.	DESCRIPTION	CHANGED	CHANGED DATE	APPROVED	APPROVED DATE					



<b>SISU AXLES</b> <small>THIS DRAWING AND THE INFORMATION CONTAINED HEREIN IS PROPRIETARY TO SISU AXLES INC. IT SHALL NOT BE REPRODUCED, COPIED OR DISCLOSED IN WHOLE OR IN PART OR USED FOR MANUFACTURE OF FOR OTHER PURPOSE WITHOUT THE WRITTEN PERMISSION OF SISU AXLES INC.</small>		Scale	Material		Product	
		1:10 DO NOT SCALE DRAWING	Drawn JALI	Date 4.5.2007	Approved	Date
<small>Dimensions mm</small>		Title				Weight
		Dimension drawing				kg
<small>Through drive</small>		Steering				Rev. Sheet Drawing size <b>A 1/1 A3</b>
		Drawing n:o				
<b>M541-063-0014</b>						

A	Modeled and redrawn	NIAH	13.04.2010	JALI	26.05.2010
REV.	DESCRIPTION	CHANGED	CHANGED DATE	APPROVED	APPROVED DATE