

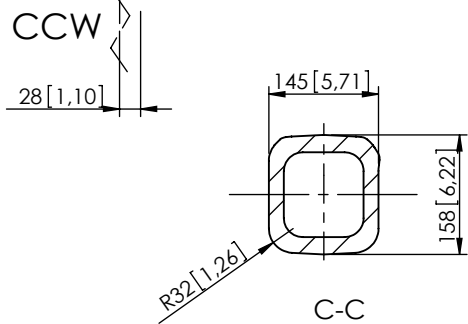
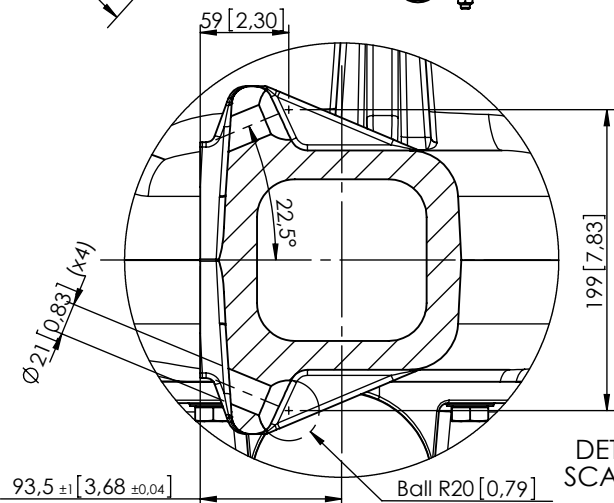
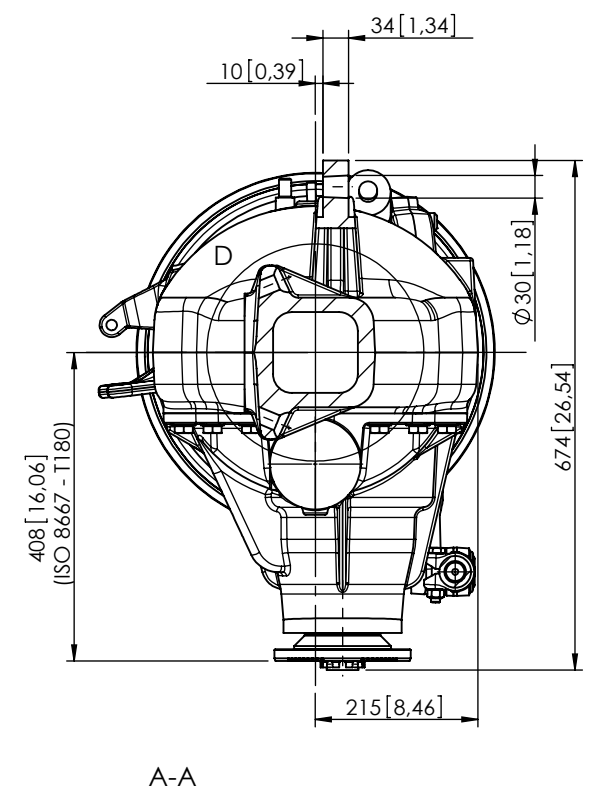
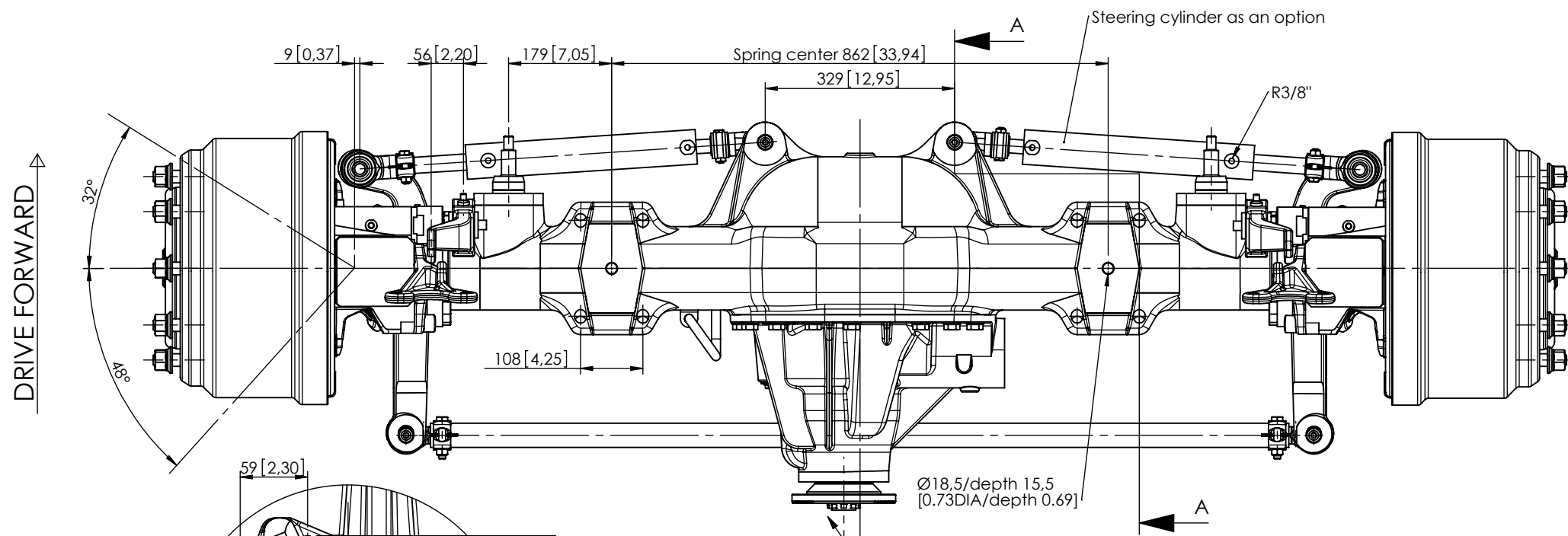
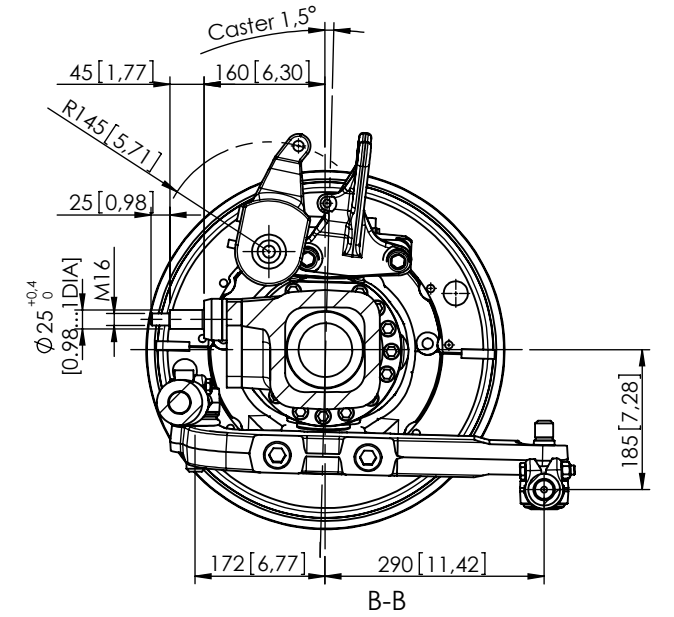
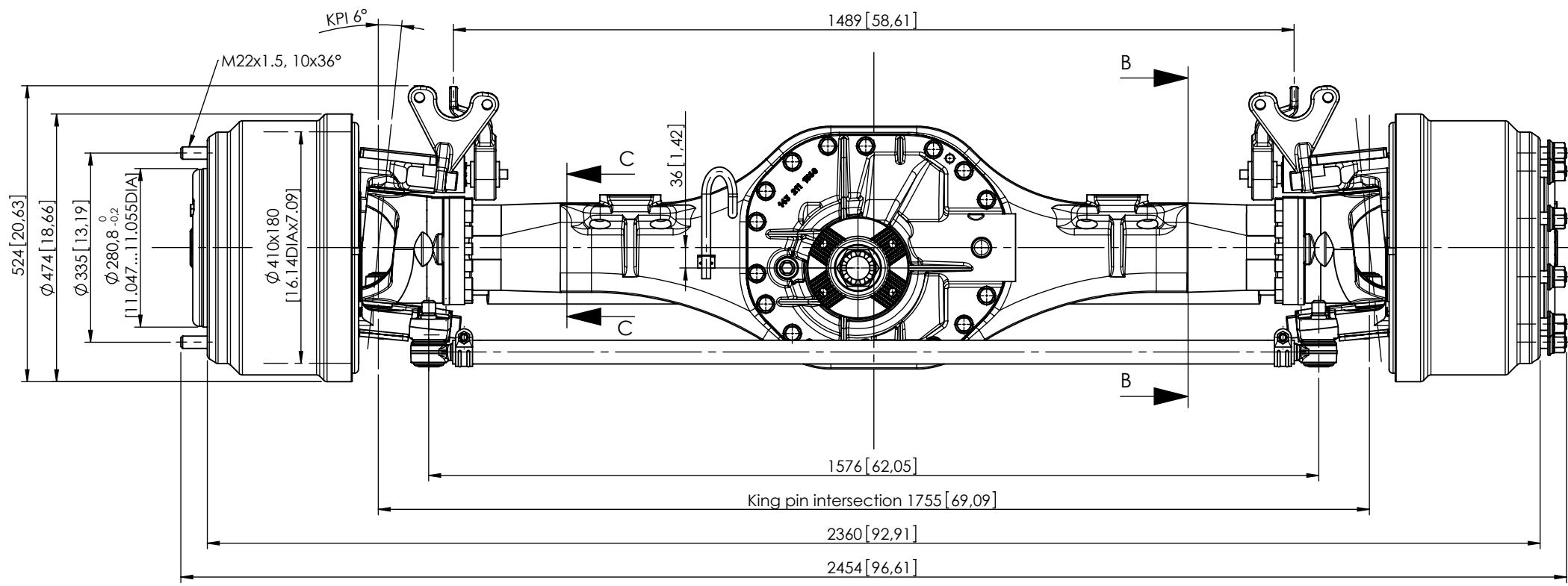
LOW SPEED, (CONTAINER HANDLING) DRIVE STEER AXLE, SSDP12S

GAWR	12 000 kg [26,500 Lb.]
GCWR	40 000 kg [88,200 Lb.]
Axle Type	Hypoid Type Differential Planetary Wheel End Reduction, 5-planet Carrier
Brakes	
Type	Drum, S-cam
Size	Ø410 mm [16,1 Inch] x 180 mm [7,1 Inch] Width
Slack Adjuster	Automatic, 165 mm [6.5 Inch] Length
Chamber	30 Square Inch
Steering	
KPI	6°
Caster	1.5°
Camber	0°
Turn angle	48°
Housing	Cast iron, Cross Section 158 mm [6,2 Inch] Height x 145 mm [5,7 Inch] Width, Center Bowl
Wheel End	10-studs on 335 mm [13,2 Inch] BC, 280.8 mm [11,06 Inch] Pilot Diameter. Minimum Wheel Size 20 Inch
Wheel offset (optimal)	Inset 90...165 mm [3.5...6.5 Inch]
Drive Flange	ISO8667-T150
Final Drive Ratios	16,57 and 20,78
Tracks Available (Over wheel mounting faces)	2360 mm [92.9 Inch]
Lubrication	
Type	API GL-5
Capacity (estimated)	Total 19 liters [27 pints]
Weight-Dry	830 kg [1,631 Lb.]

All ratings are nominal. Actual capacities determined based upon review of application data by Sisu Axles Inc.

OPTIONS:	Wheel Stud Length	Slack Adjuster Type
	Wheel Nuts	Brake Chambers
	Axle Differential Lock	Input Drive flanges
	ABS Provision	Steering Arm Configurations
	Top Coating	

Other options may be available. Contact Sisu Axles sales for more information.



SISU AXLES <small>THIS DRAWING AND THE INFORMATION CONTAINED HEREIN IS PROPRIETARY TO SISU AXLES INC. IT SHALL NOT BE REPRODUCED, COPIED OR DISCLOSED IN WHOLE OR IN PART, OR USED FOR MANUFACTURE OF FOR OTHER PURPOSE WITHOUT THE WRITTEN PERMISSION OF SISU AXLES INC.</small>		Scale	Material		Product	
		1:10 DO NOT SCALE DRAWING	Drawn	Date	Approved	Date
REMOVE BURS AND SHARP EDGES 		Dimensions	JALI	05.09.2007		Weight
		mm	Title			kg
Drawing n:o M541-019-0018		Rev.		Sheet	Drawing size	
		A		1/1	A3	

A	Modeled and redrawn	NIAH	12.04.2010	ILJU	14.04.2010
REV.	DESCRIPTION	CHANGED	CHANGED DATE	APPROVED	APPROVED DATE