

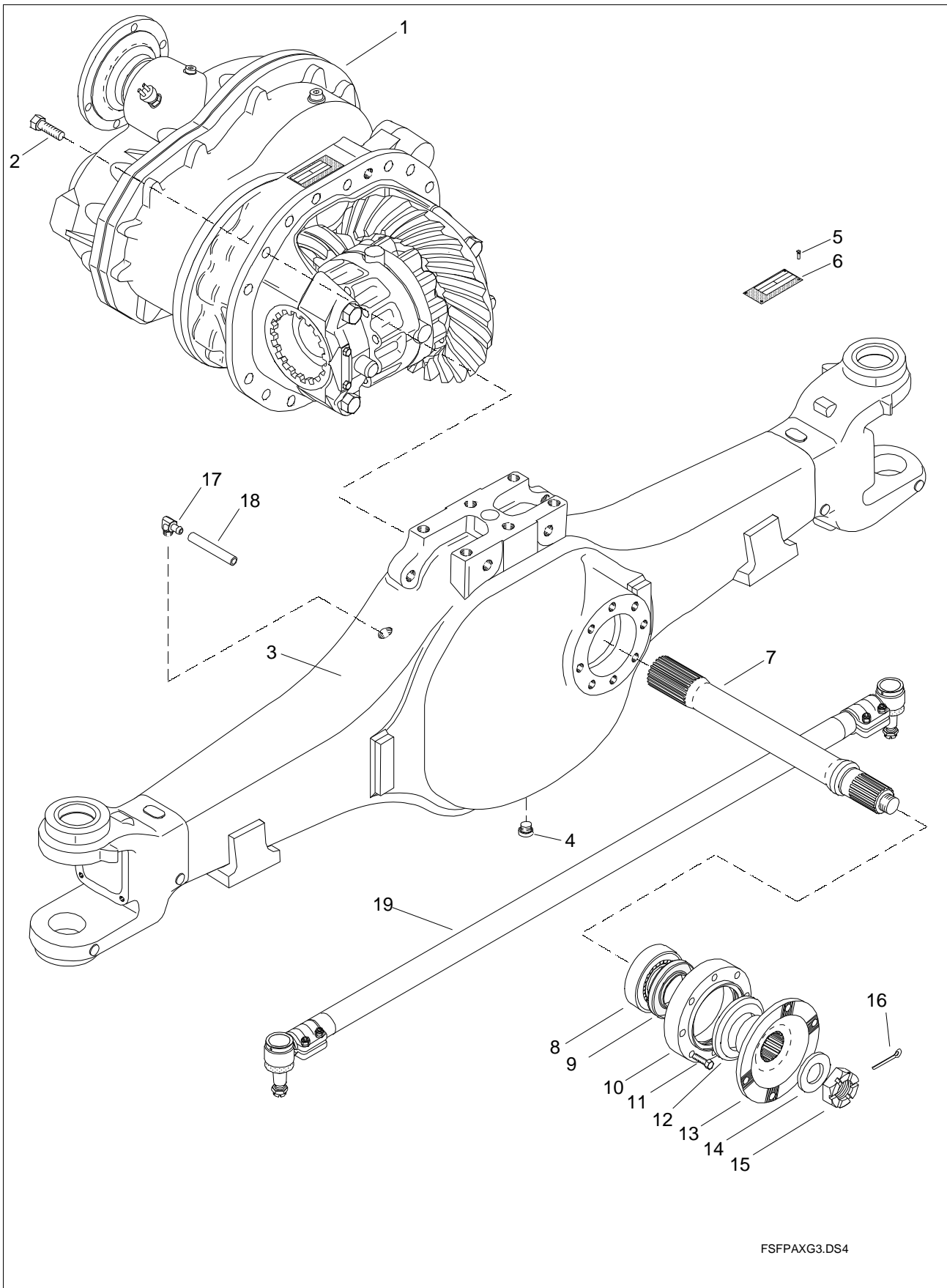
SISU AXLES

SPARE PARTS BOOK

**Front Axle
FSMP-14-G**

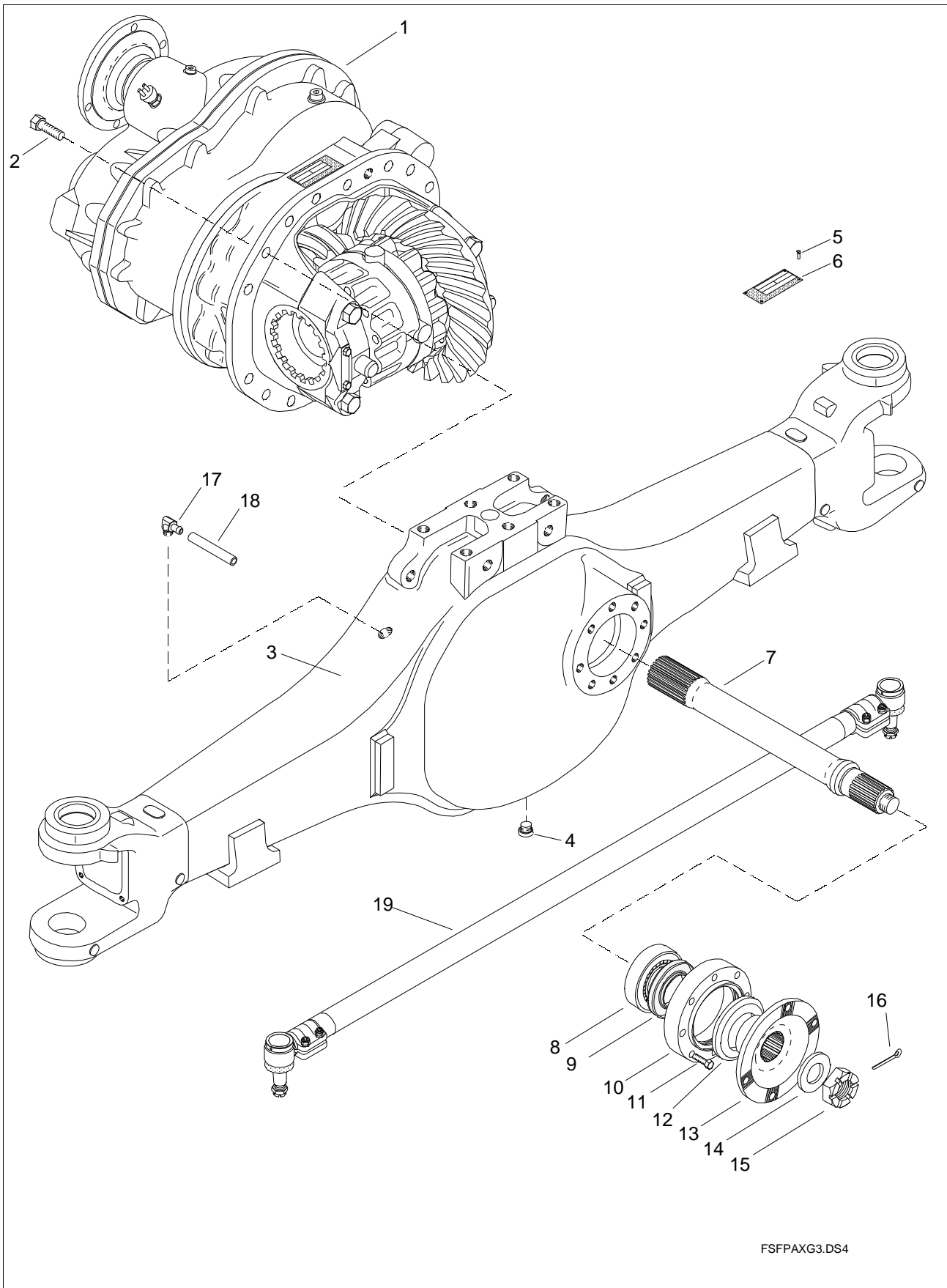
Book No. 210 (4/2009)

Sisu Axles, Inc.
Autotehtaan tie 1
PO Box 189
FIN-13101 Hämeenlinna
Finland
Phone +358 204 55 2999
Fax +358 204 55 2900



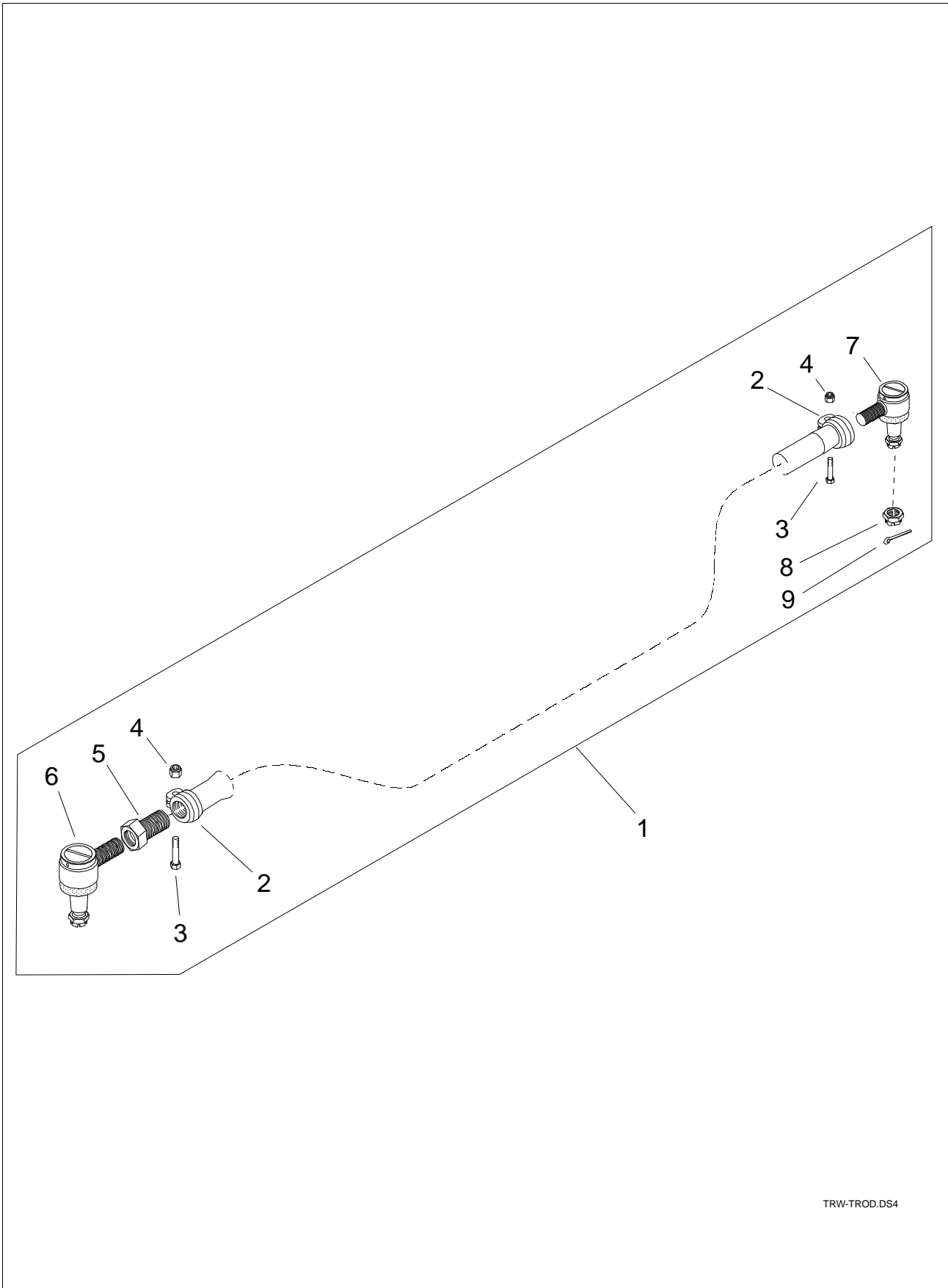
FSFPAXG3.DS4

Item	Qty.	Order no.	Description	Note
1	1	544-203-2851	Diff. Carrier Assembly	FR 8.79, HS1700-1800
1	1	544-203-2881	Diff. Carrier Assembly	FR 10.55, HS1700-1800
1	1	544-304-6329	Diff. Carrier Assembly	FR 6.36, HS1700/1800 flange
2	16	90303-16407	Hex Screw	M16x40, 10.9
3	1	541-113-2700	Axle housing	Track 2360
4	1	90831-24139	Oil plug	R 3/4", Up to No. 00702, 2/2000
4	1	90873-22109	Oil plug	M22x1.5, since No 00703, 2/2000
4	1	91201-22150	Seal ring	Cu, since No 00703, 2/2000
5	4	90111-29054	Rivet	D2.9x5
6	1	91600-20811	Name plate	
7	1	144-251-3010	Output Shaft	Without Declutch
8	1	144-287-0310	Spacer ring	D54.6/76.4x21
8	1	91734-40651	Deep groove ball bearing	
9	1	91122-08505	Shaft seal	D85/105x10
10	1	144-321-0010	Seal housing	
11	8	590303-10503	Hex Screw	M10x50
12	1	91121-09001	Seal ring	D90/110x5
13	1	138-917-2410	Output flange	HS1700/1800, N55
14	1	90705-43069	washer	D43/80x6
15	1	90546-42653	Nut	M42x1.5
16	1	90621-63633	Split pin	D6.3x63
17	1	179-841-1000	Breather pipe	
17	1	179-842-0000	Breather Cover	
17	1	90621-32253	Split pin	3.2x25
18		0		not installed
19	1	540-201-9741	Tie rod assy	L=1394 mm, drop 60 mm, complete



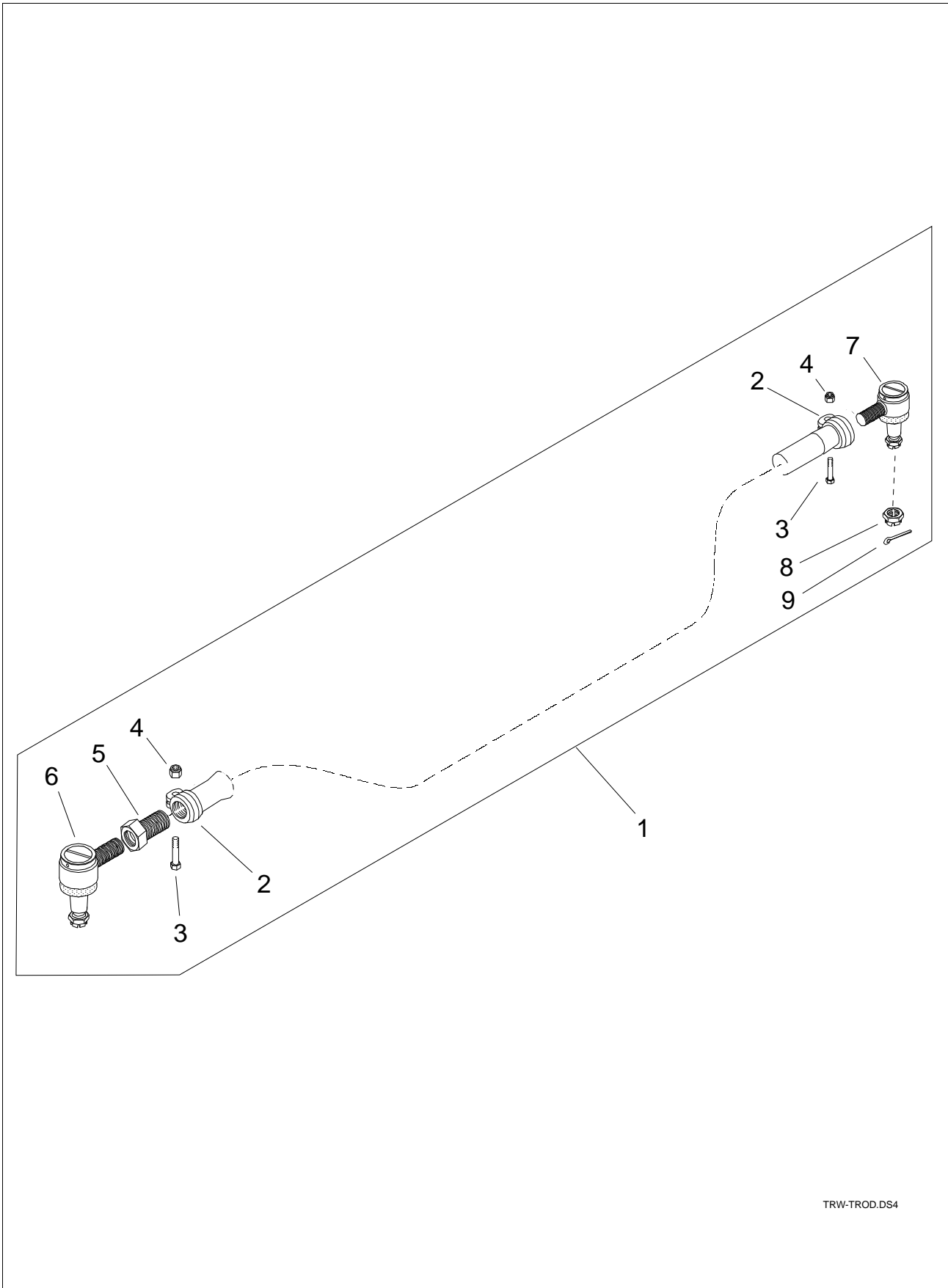
FSFPAXG3.DS4

Item	Qty.	Order no.	Description	Note
1	1	544-303-1089	Diff. Carrier Assembly	FR 9.51, HS1700/1800, S/N 143556 only
1	1	544-303-3189	Diff. Carrier Assembly	FR 9.51, HS1700/1800
1	1	544-304-6319	Diff. Carrier Assembly	FR 7.01, HS1700/1800 flange
1	1	544-304-6351	Diff. Carrier Assembly	FR 8.79, HS1700/1800 flange
1	1	544-304-6381	Diff. Carrier Assembly	FR 10.55, HS1700/1800 flange
2	16	90303-16407	Hex Screw	M16x40, 10.9
3	1	541-113-2700	Axle housing	Track 2360
3	1	541-113-4400	Axle housing	Track 2580
4	1	90873-22109	Oil plug	M22x1.5 - DIN908, Allen head, magnetic
4	1	91201-22150	Seal ring	D22/27x1.5 Cu
5	4	90111-29054	Rivet	D2.9x5
6	1	591600-20823	Name plate	
7	1	144-251-3010	Output Shaft	W/o Declutch, splines W55x26
8	1	144-287-0310	Spacer ring	D54.6/76.4x21
8	1	91734-40651	Deep groove ball bearing	D65/120 x 23
9	1	591122-08507	Shaft seal	Cassette seal D85/120x9/20
9	1	91122-08505	Shaft seal	D85/105x10, S/N 143556 only
10	1	144-321-0010	Seal housing	S/N 143556 only
10	1	544-321-0500	Seal housing	For cassette seal
11	8	590303-10503	Hex Screw	M10x50, S/N 143556 only
11	8	90303-10303	Hex Screw	M10x30
12	1	91121-09001	Seal ring	D90/110x5, S/N 143556 only
13	1	538-917-2411	Output flange	ISO - T180, N55 S/N 143556 only
13	1	538-917-2510	Output flange	HS1700/1800, N55 (cassette seal)
13	1	538-917-2511	Output flange	ISO - T180, N55 (cassette seal)
14	1	90705-43069	washer	D43/80x6
15	1	90546-42653	Nut	M42x1.5
16	1	90621-63633	Split pin	D6.3x63
17	1	179-841-1000	Breather pipe	
17	1	179-842-0000	Breather Cover	
17	1	90621-32253	Split pin	3.2x25
18		0		not installed
19	1	540-201-9741	Tie rod assy	L=1394 mm, drop 60 mm, complete
19	1	540-201-9881	Tie rod assy	L=1620 mm, drop 40 mm, complete



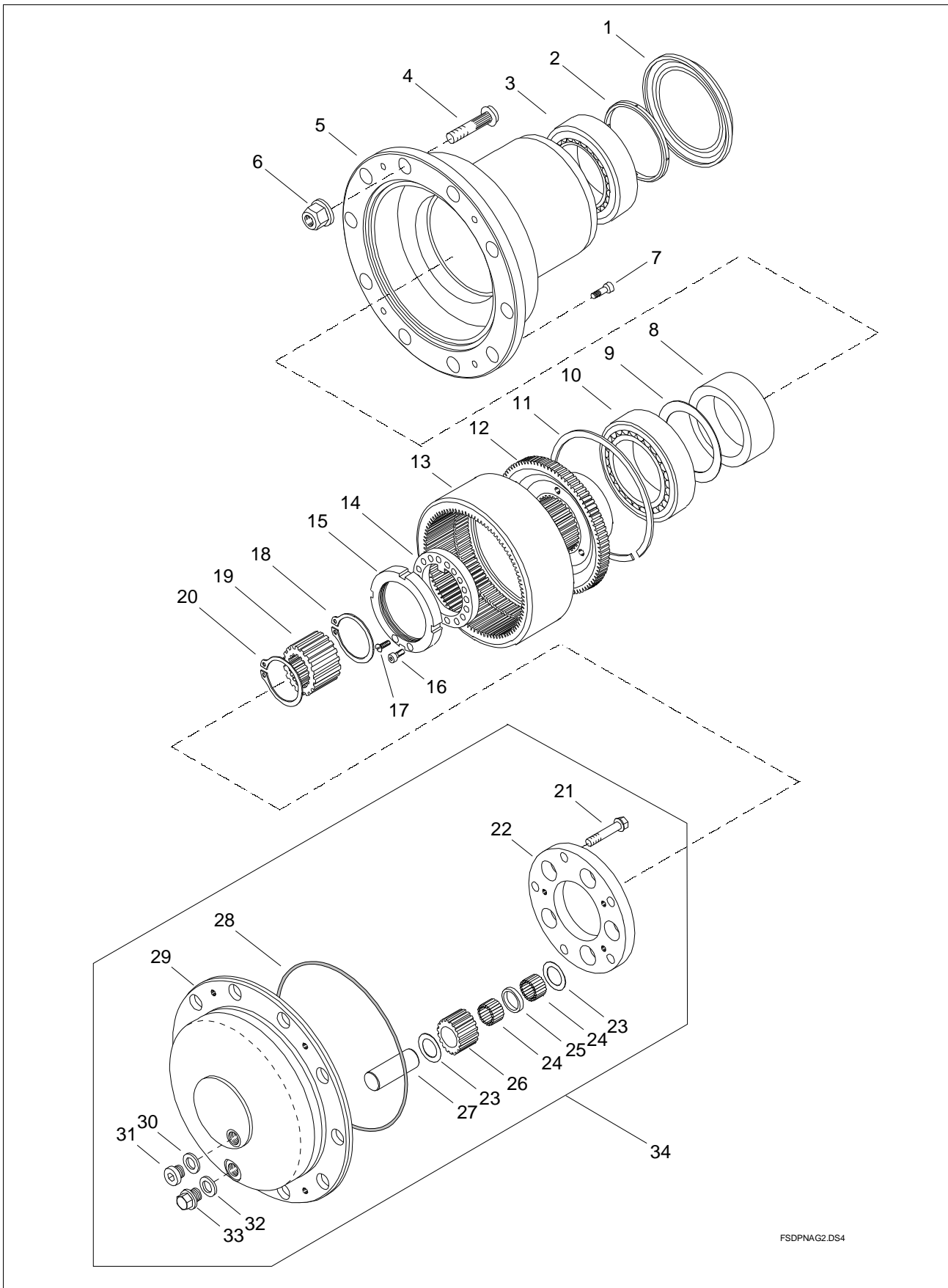
TRW-TROD.DS4

Item	Qty.	Order no.	Description	Note
1	1	540-201-9881	Tie rod assy	L=1620 mm, drop 40 mm, complete
2	2	594-104-1110	Clamp	50 mm diameter
3	2	590321-14807	Hex Screw	M14x1.5x80, DIN 960, 10.9
4	2	590556-14227	Nut	M14x1.5, DIN 980, 10
5	1	540-216-0300	Adj. piece	M38x1.5LH/M30x1.5RH
6	1	560-530-0711	Ball Joint Assembly	RH, D50, M30x1.5
7	1	560-530-0511	Ball Joint Assembly	RH, D50, M38x1.5
8	2	590546-30463	Nut	M30x1.5
9	2	90621-63633	Split pin	D6.3x63



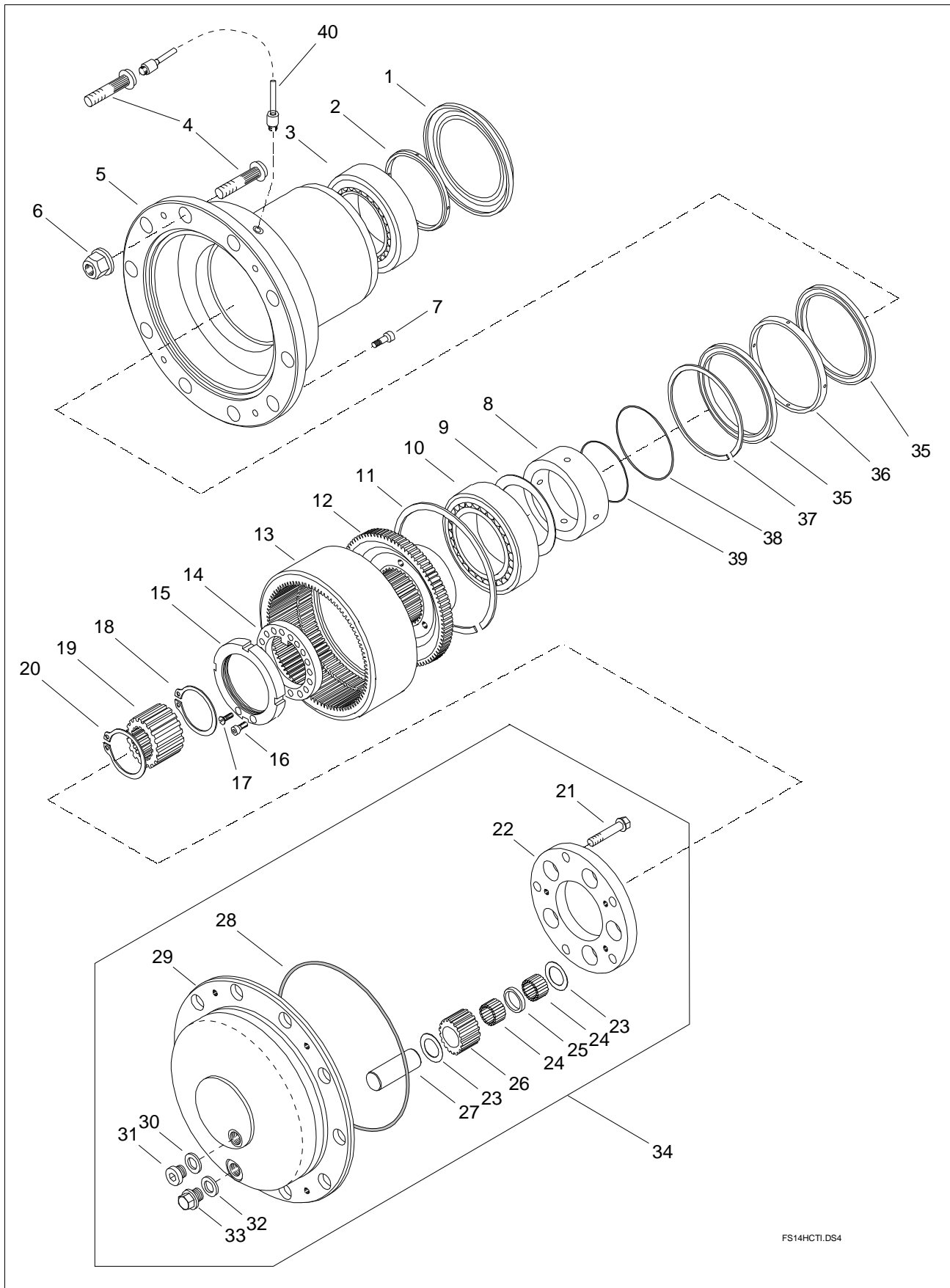
TRW-TROD.DS4

Item	Qty.	Order no.	Description	Note
1	1	540-201-9741	Tie rod assy	L=1394 mm, drop 60 mm, complete
2	2	594-104-1110	Clamp	50 mm diameter
3	2	590321-14807	Hex Screw	M14x1.5x80, DIN 960, 10.9
4	2	590556-14227	Nut	M14x1.5, DIN 980, 10
5	1	540-216-0300	Adj. piece	M38x1.5LH/M30x1.5RH
6	1	560-530-0711	Ball Joint Assembly	RH, D50, M30x1.5
7	1	560-530-0511	Ball Joint Assembly	RH, D50, M38x1.5
8	2	590546-30463	Nut	M30x1.5
9	2	90621-63633	Split pin	D6.3x63



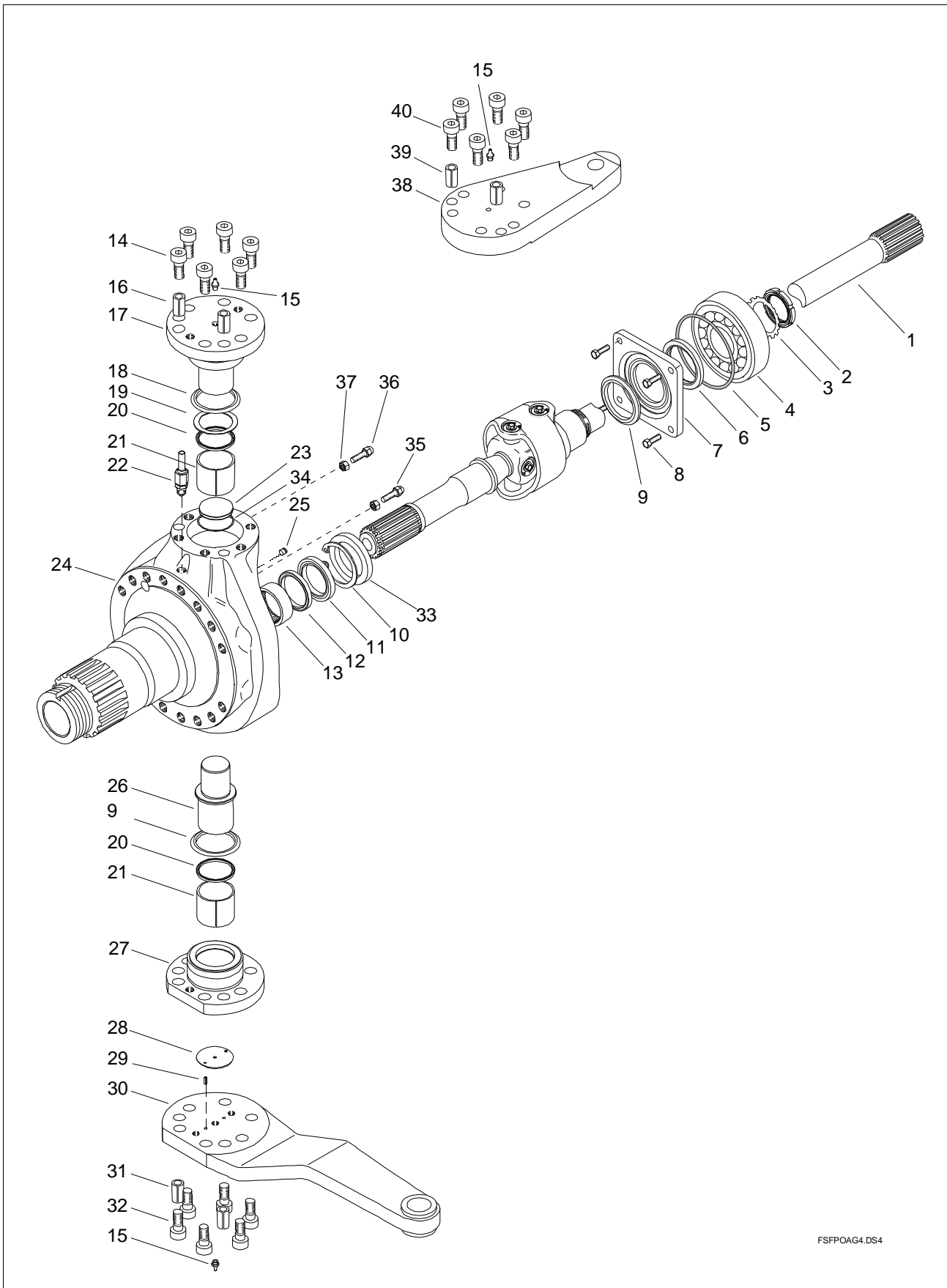
FSDPNAG2.DS4

Item	Qty.	Order no.	Description	Note
1	2	591122-13301	Shaft seal	Ø133,4/187,5, Up to No. 20286 (2/2002)
1	2	591122-15001	Shaft seal	Ø150/180, Since No. 20287 (2/2002)
2	2	540-415-1010	Spacer ring	Up to No. 20286 (2/2002)
2	2	540-415-1300	Spacer ring	Since No. 20287 (2/2002)
2	2	91101-33026	O-ring	133x2.62, Since No. 20287 (2/2002)
3	2	91744-01101	T. Roller bearing	
4	20	140-911-2700	Wheel bolt	L=113 mm
4	20	540-911-3500	Wheel bolt	L=103 mm
5	NLA	541-411-1401	Wheel hub	Superceded by item 541-411-1402
5	2	541-411-1402	Wheel hub	Reinforced, with seal 591122-13301
5	NLA	541-411-1410	Wheel hub	Superceded by item 541-411-1412
5	2	541-411-1412	Wheel hub	reinforced, with seal 591122-15001
6	20	540-916-1610	Wheel nut	M22x1.5
7	8	590313-10303	Allen Screw	M10x30
8	2	543-416-0210	Spacer ring	L=44 mm
9	ar	590731-09510	Shim	s= 0.1 mm
9	ar	590731-09515	Shim	s= 0.15 mm
9	ar	590731-09520	Shim	s= 0.2 mm (preferred thickness)
9	ar	590731-09530	Shim	s= 0.3 mm (preferred thickness)
9	ar	590731-09550	Shim	s= 0.5 mm (preferred thickness)
9	ar	590732-09510	Shim	s= 1.0 mm (preferred thickness)
10	2	91744-01201	T. Roller bearing	
11	2	91720-22001	Retainer ring	D220x3
12	2	535-271-0611	Ring gear hub	
13	2	535-261-2110	Ring gear	
14	2	143-418-0510	Lock plate	S=6 mm, holed
15	2	599-290-8004	Lock Nut	M90x2
16	2	590319-08186	Allen Screw	M8x18
17	2	590319-08126	Allen Screw	M8x12
18	2	591711-05500	Retainer ring	D55x2
19	2	535-211-1310	Sun gear	N55x2x26
20	2	591711-05500	Retainer ring	D55x2
21	10	590169-01670	Special screw	M16x1.5x70
22	2	535-231-1310	Planet carrier	
23	20	590-353-1100	Spacer plate	D33.5/55.5x1.47
24	480	91385-50240	Needle roller	D5x23.8
25	10	590-354-3100	Spacer ring	D33.5/42x7
26	10	535-241-1310	Planet gear	
27	10	535-251-1410	Planet gear shaft	
28	2	591109-66052	O-ring	D266x5.33
29	2	541-471-0410	Planetary gear housing	
30	2	91201-22150	Seal ring	D22/27x1.5 Cu
31	2	90873-22109	Oil plug	M22x1.5, Allen head
32	2	91201-22150	Seal ring	D22/27x1.5 Cu
33	2	90871-22193	Plug screw	M22x1.5, hex head
34	2	541-404-0171	Planetary gear	



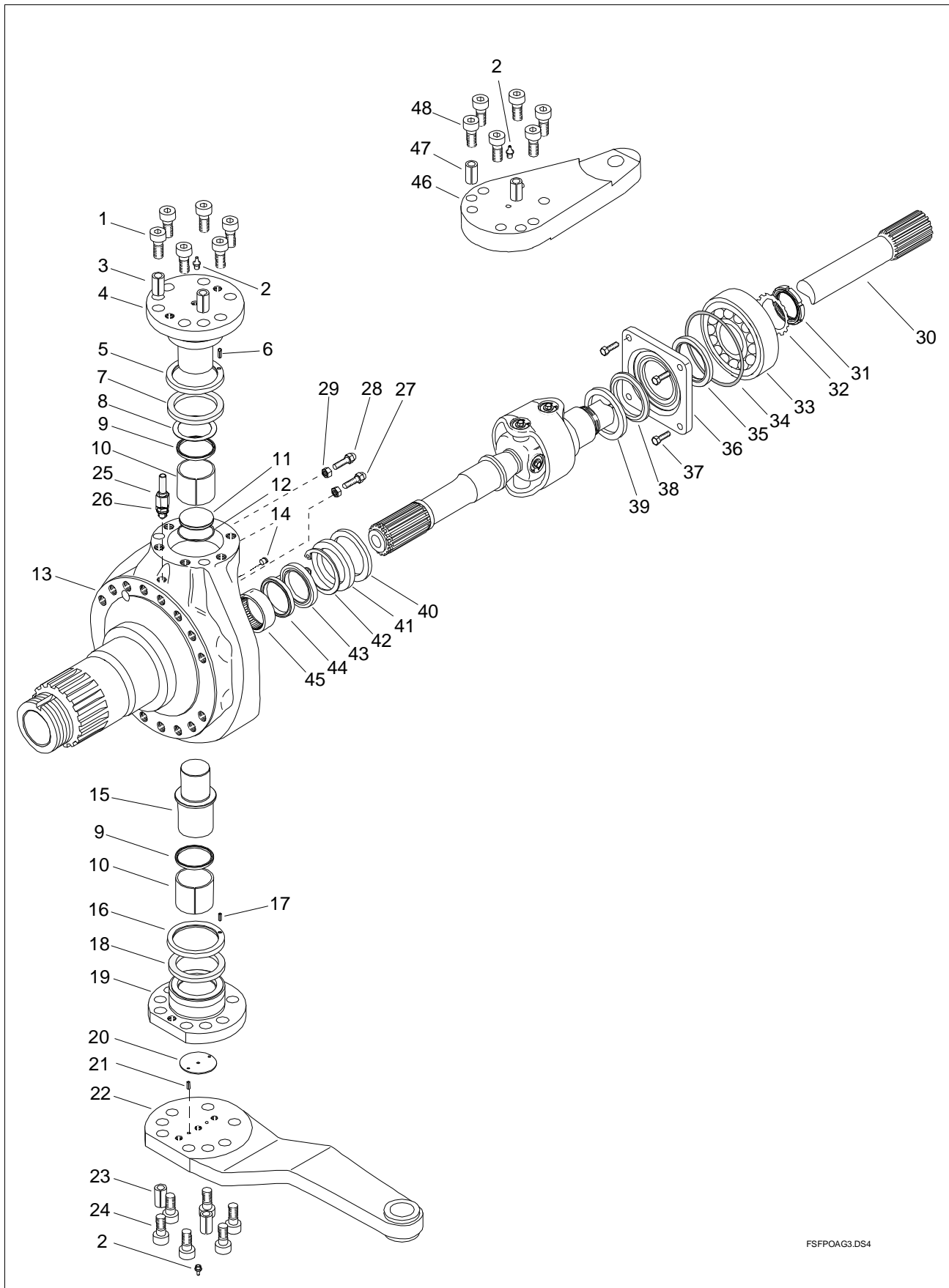
FS14HCTI.DS4

Item	Qty.	Order no.	Description	Note
1	2	591122-15001	Shaft seal	Ø150/180
2	2	540-415-1300	Spacer ring	D133.35/150x22
2	2	91101-33026	O-ring	133x2.62
3	2	91744-01101	T. Roller bearing	
4	18	140-911-2510	Wheel bolt	L=93 mm
4	18	540-911-3500	Wheel bolt	L=103 mm
4	2	540-911-3610	Wheel bolt	CTI, L=91mm
4	2	540-911-3700	Wheel bolt	CTI, L=103 mm
5	NLA	541-411-2300	Wheel hub	FS-14, CTI, superceded by item 541-411-2302
5	2	541-411-2302	Wheel hub	FS-14, CTI, reinforced
6	20	540-916-1610	Wheel nut	M22x1.5
7	8	590313-10303	Allen Screw	M10x30
8	2	540-415-1500	Spacer ring	D95/125x44, CTI
9	NLA	590731-09510	Shim	s= 0.1 mm
9	NLA	590731-09515	Shim	s= 0.15 mm
9	ar	590731-09520	Shim	s= 0.2 mm
9	ar	590731-09530	Shim	s= 0.3 mm
9	ar	590731-09550	Shim	s= 0.5 mm
9	ar	590732-09510	Shim	s= 1.0 mm
10	2	91744-01201	T. Roller bearing	
11	2	91720-22001	Retainer ring	D220x3
12	2	535-271-0611	Ring gear hub	
13	2	535-261-2110	Ring gear	
14	2	143-418-0510	Lock plate	S=6 mm, punched
15	2	599-290-8004	Lock Nut	M90x2
16	2	590319-08186	Allen Screw	M8x18
17	2	590319-08126	Allen Screw	M8x12
18	2	591711-05500	Retainer ring	D55x2
19	2	535-211-1310	Sun gear	N55x2x26
20	2	591711-05500	Retainer ring	D55x2
21	10	590169-01670	Special screw	M16x1.5x70
22	2	535-231-1310	Planet carrier	
23	20	590-353-1100	Spacer plate	D33.5/55.5x1.47
24	480	91385-50240	Needle roller	D5x23.8
25	10	590-354-3100	Spacer ring	D33.5/42x7
26	10	535-241-1310	Planet gear	
27	10	535-251-1410	Planet gear shaft	
28	2	591109-66052	O-ring	D266x5.33
29	2	541-471-0410	Planetary gear housing	
30	2	91201-22150	Seal ring	D22/27x1.5 Cu
31	2	90873-22109	Oil plug	M22x1.5, Allen head
32	2	91201-22150	Seal ring	D22/27x1.5 Cu
33	2	90871-22193	Plug screw	M22x1.5, hex head
34	2	541-404-0171	Planetary gear	
35	4	591122-12501	Shaft seal	CTI, D125/145x7.5/11,3
36	2	540-415-1810	Spacer ring	CTI, D145/137x14.5
37	2	591720-14501	Retainer ring	CTI, FK7-ESB - D145/6.0x1.5
38	2	591107-05022	O-ring	CTI, D105x2, superceded by item 591107-05252
38	2	591107-05252	O-ring	CTI, D105x2.5
39	2	91106-89532	O-ring	CTI, D89.5x3
40	2	579-615-0500	Pipe	CTI, including fittings



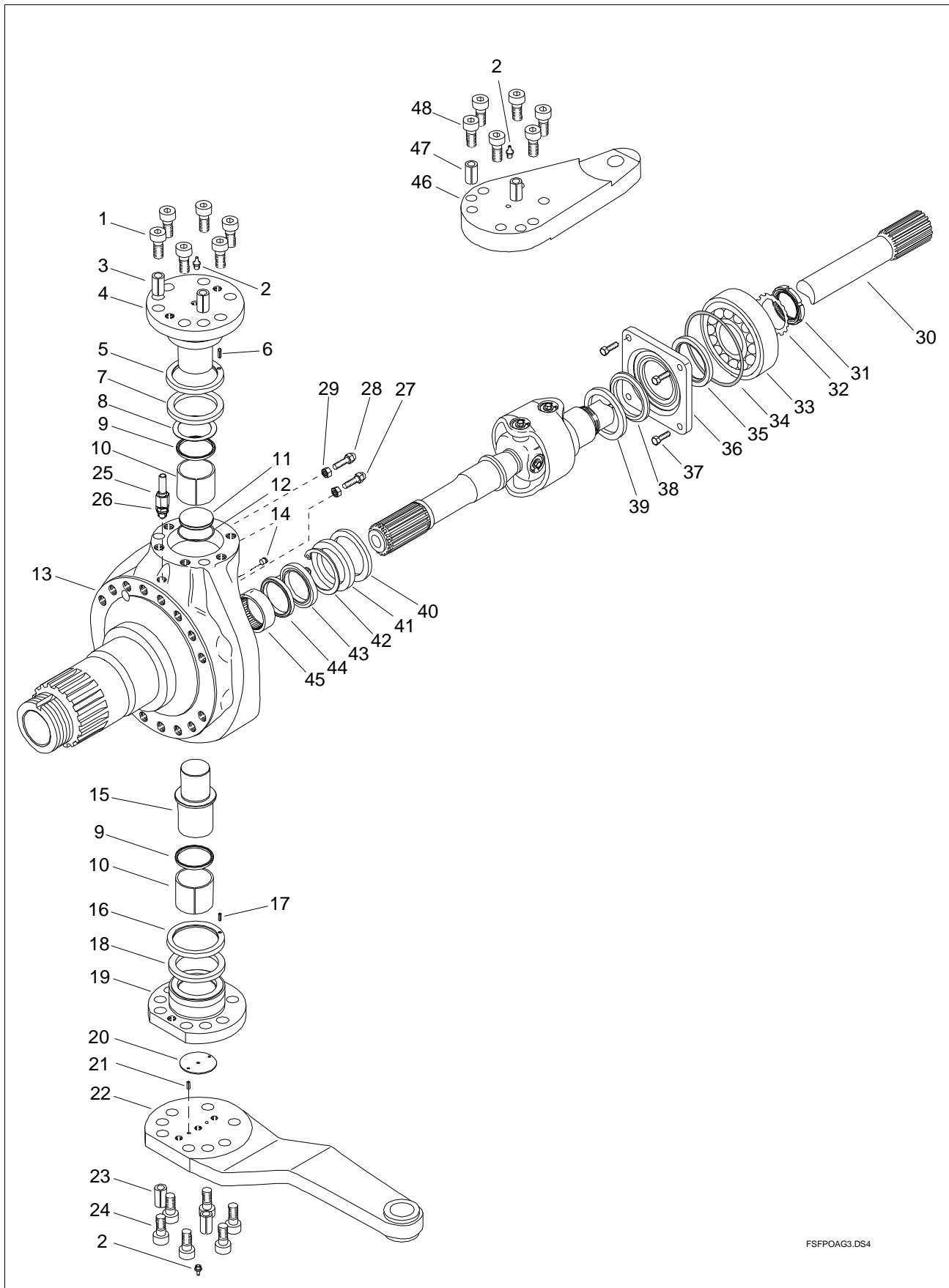
FSFPOAG4.DS4

Item	Qty.	Order no.	Description	Note
1	1	541-502-0301	Axle Shaft	FSMP, RH
1	2	541-502-0311	Axle Shaft	FSDP
1	1	541-502-0401	Axle Shaft	FSMP, LH
2	2	590575-06040	Lock Nut	
3	2	590735-06012	Lock plate	
4	2	591733-00601	Spherical roller bearing	
5	2	591101-01045	O-ring	
6	2	090-500-6501	Shaft seal	
7	2	541-532-0000	Cover	For Gamma-seal, up to No. 00179 (1/2000)
7	2	541-532-0010	Cover	For Foam-seal, since No. 00179 (1/2000)
8	8	90303-10303	Hex Screw	M10x30
9	2	590-561-0010	Gasket	Foam-seal, with cover 541-532-0010
9	2	591123-06501	Gamma-seal	+2 pcs with cover 541-532-0000
10	2	092-957-8000	Retainer ring	
11	2	591122-06003	Shaft seal	
12	2	91122-06001	Shaft seal	
13	2	591738-10601	Needle bush	
14	12	90311-16508	Allen Screw	M16x50, w/o steering arms
15	4	91402-10003	Grease nipple	
15	4	91421-06060	Shield hat	
16	4	590602-18400	Spring cotter	D18x40, w/o steering arms
17	2	540-121-1710	King pin	
18	2	090-400-7000	Gamma-seal	
19	ar	590731-05621	Shim	0.2 mm
19	ar	590731-05631	Shim	0.3 mm
19	ar	590731-05651	Shim	0.5 mm
19	ar	599-413-8100	Spacer plate	1.0 mm
20	4	591222-05501	Shaft seal	
21	4	590-314-8110	King pin bushing	
22	2	579-616-0000	Breather pipe	
22	2	591937-04027	Support ring	
22	2	591952-40610	Fitting	Angle Fitting 90°
23	2	595-518-0110	Plug	
24	2	541-141-1302	Steering knuckle	
25	2	590804-00060	Plug	
26	2	540-121-1800	King pin	
27	2	540-136-0210	Bearing housing	
28	2	599-413-8010	Thrust washer	
29	4	590602-04140	Spring cotter	
30	1	540-241-6300	Tie rod arm	RH
30	1	540-241-6310	Tie rod arm	LH
31	4	590602-18600	Spring cotter	D18x60
32	12	90311-16608	Allen Screw	M16x60
33	2	590-561-0000	Gasket	Foam-seal, oil before installation
34	2	591101-04720	O-ring	
35	2	140-249-1210	Stop screw	
36	2	140-249-1500	Stop screw	
37	4	90502-16243	Nut	
38	1	540-261-6200	Steering arm	RH
38	1	540-261-6210	Steering arm	LH
39	ar	590602-18700	Spring cotter	D18x70, 2 pcs per steering arm
40	ar	90311-16908	Allen Screw	M16x90, 6 pcs per steering arm



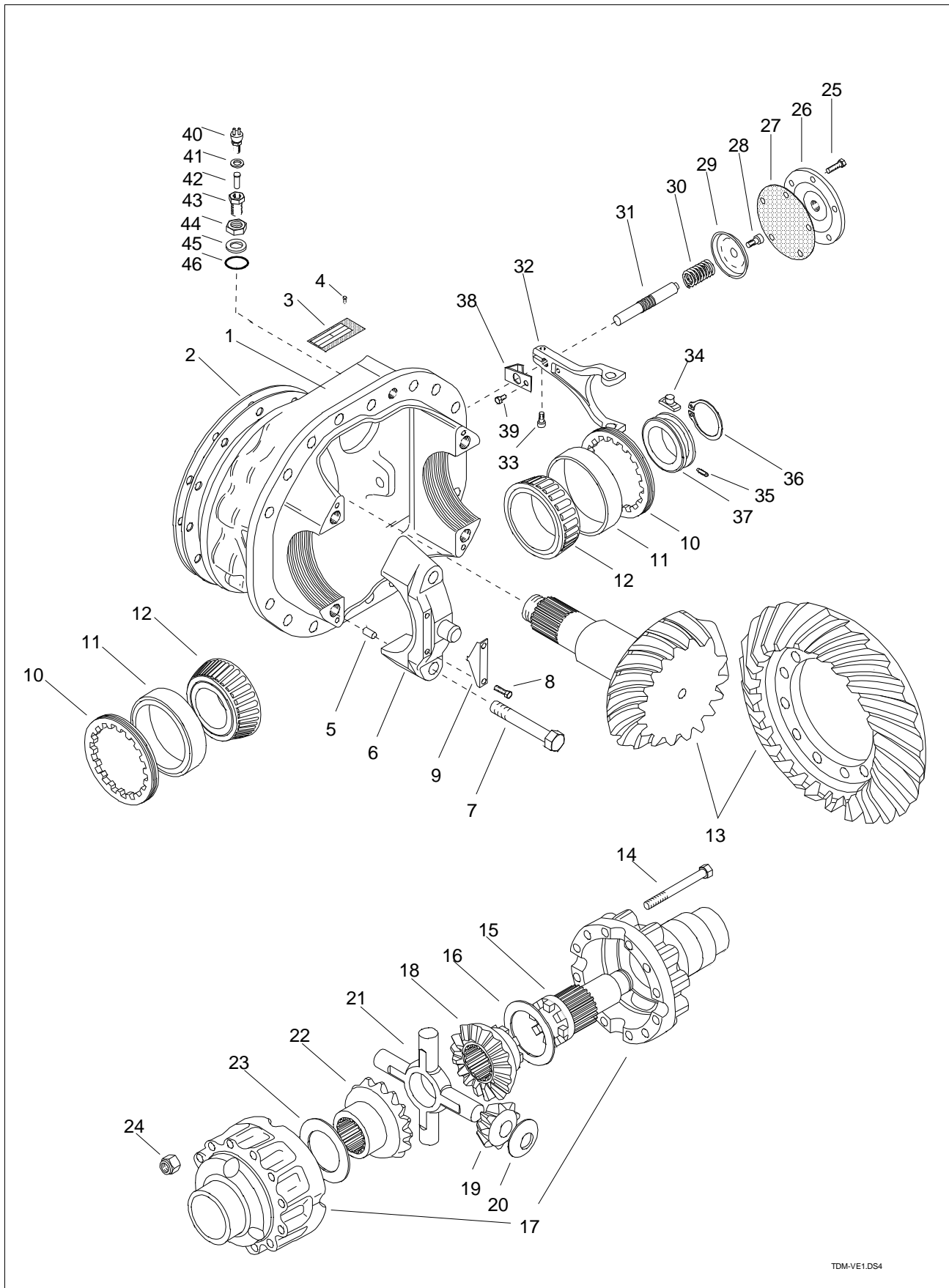
FSFPOAG3.DS4

Item	Qty.	Order no.	Description	Note
1	12	90311-16508	Allen Screw	M16x50, w/o steering arms
2		91402-10003	Grease nipple	M10x1, Straight
2	4	91421-06060	Shield hat	
3	4	590602-18400	Spring cotter	D18x40, w/o steering arms
4	2	540-121-2010	King pin	
5	2	590-722-1200	Protective cup	D79.5/93x10.5
6	2	590602-03100	Spring cotter	D3x10 mm
7	2	590-561-0110	Gasket	Foam-seal, Oil before installation
8	ar	590731-05621	Shim	0.2 mm
8	ar	590731-05631	Shim	0.3 mm
8	ar	590731-05651	Shim	0.5 mm
8	ar	599-413-8100	Spacer plate	1.0 mm
9	4	591222-05501	Shaft seal	D55/63x5.0
10	4	590-314-8110	King pin bushing	D60/55x50
11	2	595-518-0110	Plug	D50x6
12	2	591101-04720	O-ring	D47x2
13	2	541-141-1303	Steering knuckle	W/o CTI-system
13	2	541-141-1600	Steering knuckle	With CTI-system
14	2	590804-00060	Plug	Not serviced separately
15	2	540-121-1800	King pin	
16	2	590-722-1210	Protective cup	D65/93x11
17	2	590111-29064	Rivet	2.89x6.35
18	2	590-561-0200	Gasket	Foam-seal, Oil before installation
19	2	540-136-0301	Bearing housing	
20	2	599-413-8010	Thrust washer	D55x2.5
21	4	590602-04140	Spring cotter	D4x14
22	1	540-241-6300	Tie rod arm	RH, L=420 mm, Taper 1:10
22	1	540-241-6310	Tie rod arm	LH, L=420 mm, Taper 1:10
23	4	590602-18600	Spring cotter	D18x60
24	12	90311-16608	Allen Screw	M16x60
25	2	579-616-0000	Breather pipe	D6x1, L=1500, up to S/N 151801 (4/2005)
25	2	579-616-0010	Breather pipe	D8/6, L=1500, since S/N 151802 (4/2005)
25	2	591937-04027	Support ring	D4, up to S/N 151801 (4/2005)
25	2	591937-06027	Support ring	D6, since S/N 151802 (4/2005)
26	2	591952-40610	Fitting	M10x1, D6, up to S/N 151801 (4/2005)
26	2	591952-40810	Fitting	M10x1, D8/6, since S/N 151802 (4/2005)
27	2	140-249-1210	Stop screw	Total L=52mm (42 degree steering angle)
27	2	140-249-1400	Stop screw	Total L=80mm (15 degree steering angle)
28	2	140-249-1400	Stop screw	Total L=80mm (15 degree steering angle)
28	2	140-249-1500	Stop screw	Total L=65mm (42 degree steering angle)
29	4	90502-16243	Nut	M16
30	1	541-502-0301	Axle Shaft	RH, L=1150, Track 2360
30	1	541-502-0401	Axle Shaft	LH, L=1255, Track 2360
30	1	541-502-0401	Axle Shaft	RH, L=1255, Track 2580
30	1	541-502-0441	Axle Shaft	LH, L=1345, Track 2580
31	2	590575-06040	Lock Nut	M60x2, KM12
32	2	590735-06012	Lock plate	MB12, D60x1.5
33	2	591733-00601	Spherical roller bearing	D60/110x28
34	2	591101-01045	O-ring	D101x4.5
35	2	090-500-6501	Shaft seal	D65/90x10
36	2	541-532-0010	Cover	For Foam-seal
37	8	90303-10303	Hex Screw	M10x30
38	2	590-561-0300	Gasket	Foam-seal, Oil before installation
39	2	590-711-9110	Protective cup	D85x9
40	2	590-711-9100	Seal housing	
41	2	590-561-0210	Gasket	Foam-seal, Oil before installation
42	2	092-957-8000	Retainer ring	D80x2.5
43	2	591122-06003	Shaft seal	D60/80x12
44	2	91122-06001	Shaft seal	D60/75x8
45	2	591738-10601	Needle bush	D60/72x35



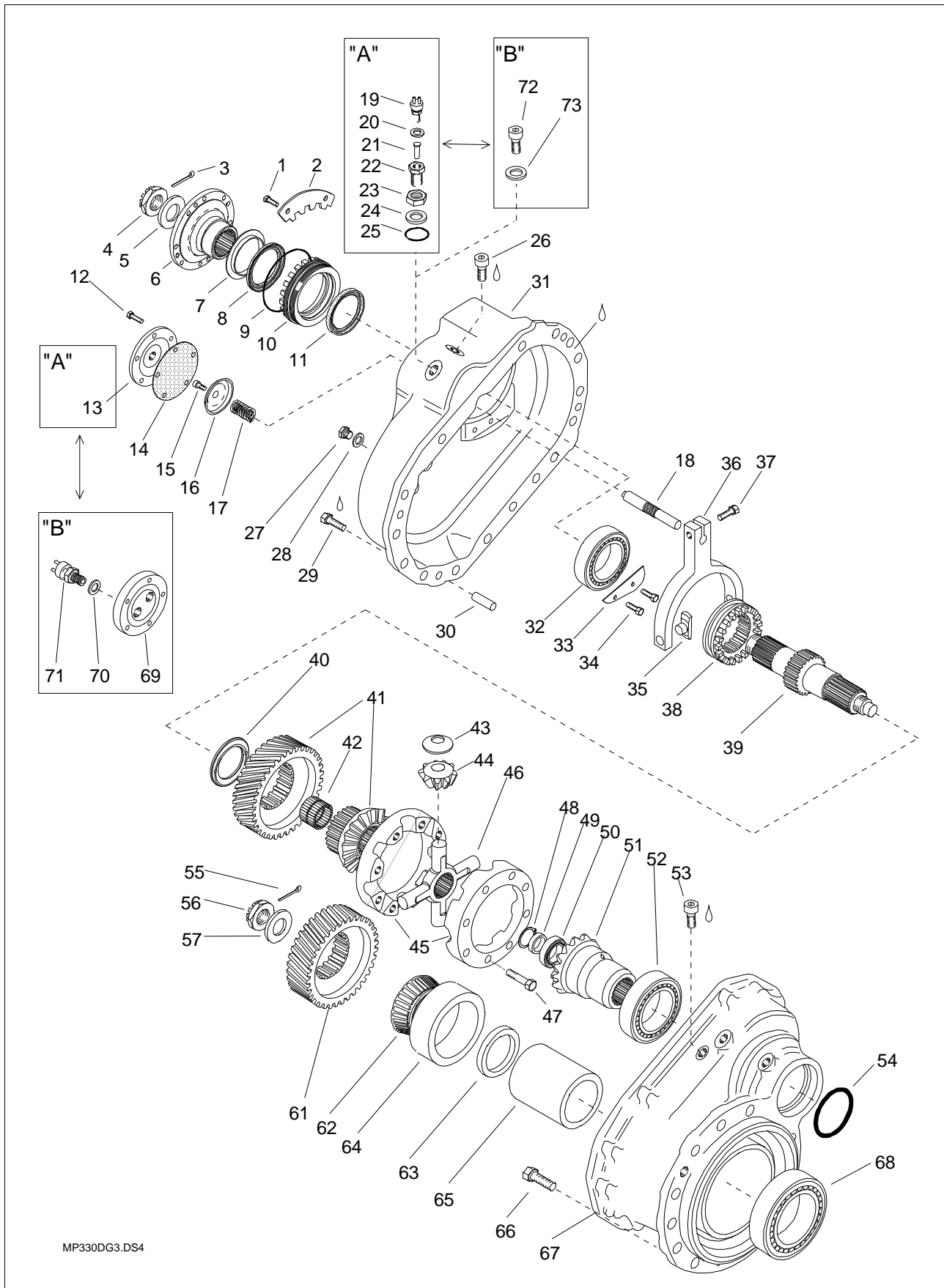
FSFPOAG3.DS4

Item	Qty.	Order no.	Description	Note
46	2	504-0310-301	Steering arm	L=216 mm, Taper 1:8 (L=34), big end down
46	1	504-0310-302	Steering arm	LH, L=271 mm, Taper 1:8 (L=34), big end down
46	1	504-0310-303	Steering arm	RH, L=271 mm, Taper 1:8 (L=34), big end down
46	1	540-261-6200	Steering arm	RH, L=215 mm, Taper 1:8 (L=34), big end down
46	1	540-261-6210	Steering arm	LH, L=215 mm, Taper 1:8 (L=34), big end down
46	1	540-261-7500	Steering arm	RH, L=271 mm, Taper 1:8 (L=32.3), big end down
46	1	540-261-7510	Steering arm	LH, L=271 mm, Taper 1:8 (L=32.3), big end down
47	ar	590602-18700	Spring cotter	D18x70, 2 pcs per steering arm
48	ar	590311-16808	Allen Screw	M16x80, 6 pcs per steering arm

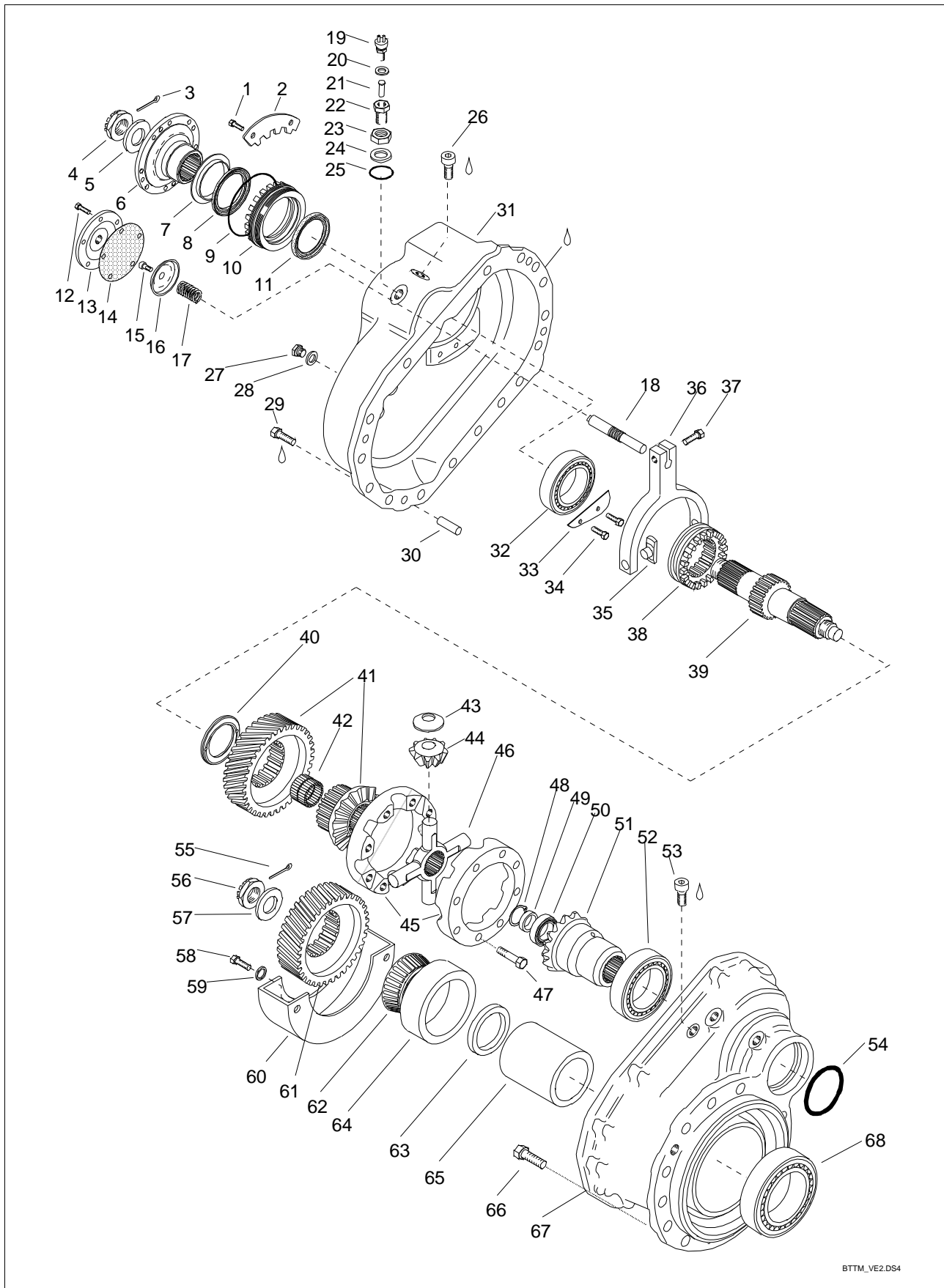


TDM-VE1.DS4

Item	Qty.	Order no.	Description	Note
1	1	144-210-1911	Differential Carrier	Inc. Bearing Case Halfs
2	ar	144-239-2000	Shim	(1.0 mm)
2	ar	144-239-2001	Shim	(0.5 mm)
2	ar	144-239-2002	Shim	(0.2 mm)
2	ar	144-239-2003	Shim	(0.1 mm)
3	1	91600-20811	Name plate	
4	4	90111-29054	Rivet	
5	4	590604-08141	Pin	Ø8x14
6	2	143-214-2180	Bearing Case Half	Not Serviced Separately
7	4	90301-20377	Hex Screw	
8	4	90303-08103	Hex Screw	M8x10
9	2	143-227-0610	Lock plate	
10	2	143-226-0012	Adjusting nut	
11	2	090-121-4700	Bearing outer race	
12	2	090-110-9000	Bearing inner race	
13	1	143-240-3351	Ring and pinion gear set	Final Ratio 8.79
13	1	143-240-3381	Ring and pinion gear set	Final Ratio 10.55
14	12	90321-16538	Hex Screw	
15	1	144-341-1700	Sliding Gear	
16	1	090-359-7000	Thrust washer	
17	1	143-310-3811	Diff. case assy	
18	1	543-351-4310	Side gear	
19	4	143-341-0700	Pinion gear	
20	4	143-345-0400	Thrust washer	
21	1	143-331-0603	Spider	
22	1	543-351-4210	Side gear	
23	1	090-357-5000	Thrust washer	
24	12	90556-16247	Nut	
25	5	90303-08203	Hex Screw	
26	1	172-161-0700	Membrane cover	M18x1.5
26	1	172-161-0701	Membrane cover	M16x1.5
27	1	172-351-1202	Membrane	
28	1	90319-08206	Screw	
29	1	172-361-0410	Push plate	
30	1	097-122-0100	Return spring	
31	1	172-212-1710	Sliding Shaft	
32	1	144-751-1210	Control fork	w/o diff. lock indicator switch
32	1	544-751-1410	Control fork	With optional diff. lock indicator switch
33	1	90313-06208	Allen Screw	
34	2	133-348-0710	Sliding shoe	
35	1	90335-05108	Stopping screw	
36	1	91711-06500	Retainer ring	
37	1	144-348-0000	Sliding ring	
38	1	541-812-0200	Guide plate	With optional diff. lock indicator switch
39	1	90303-08123	Hex Screw	With optional diff. lock indicator switch
40	1	186-490-0281	Signal Lamp Switch	Optional
41	1	91201-12150	Seal ring	Optional
42	1	141-812-0100	Control pin	Optional
43	1	141-812-0000	Binding screw	Optional
44	1	91842-18243	Lock Nut	Optional
45	1	91838-18010	Pressure ring	Optional
46	1	91838-18100	O-ring	Optional

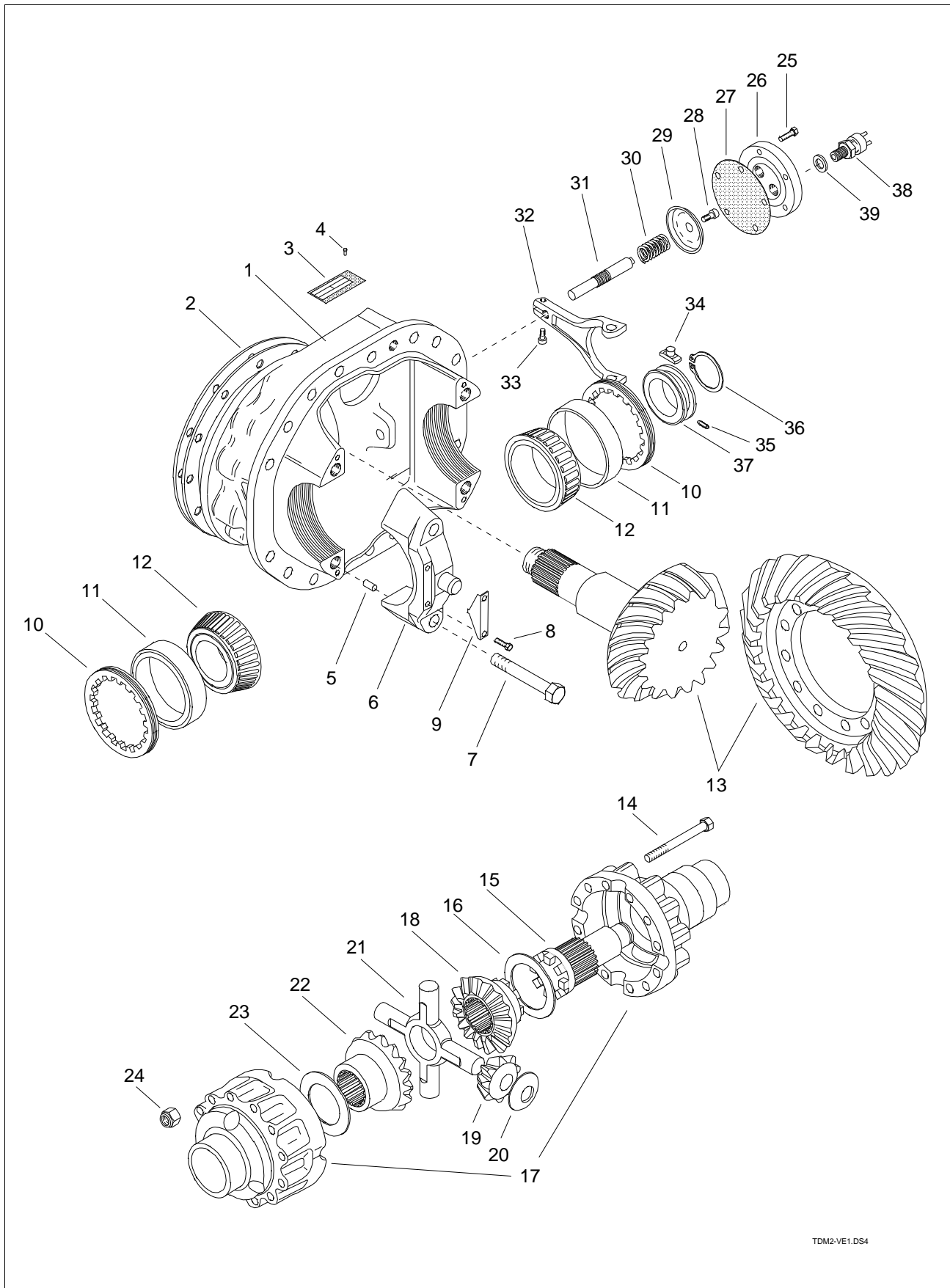


Item	Qty.	Order no.	Description	Note
1	2	90303-08203	Hex Screw	M8x20
2	1	143-227-0710	Lock plate	
3	1	90621-63633	Split pin	6.3x63
4	1	90546-42653	Nut	M42x1.5
5	1	90705-43069	washer	D43/80x6
6	1	138-918-0400	Flange	HS1700-1800
6	1	138-918-0401	Flange	ISO 8667 - T180
7	1	090-711-9010	Shield	
8	1	090-400-9500	V-ring	VS-95
9	1	91101-39530	O-ring	D139.5x3
10	1	143-226-1200	Adjusting nut	
11	1	91122-08505	Shaft seal	D85/105x10
12	5	90303-08203	Hex Screw	M8x20
13	1	172-161-0700	Membrane cover	M18x1.5, up to 2/1996
13	1	172-161-0701	Membrane cover	M16x1.5, since 2/1996
14	1	172-351-1202	Membrane	
15	1	90319-08206	Screw	M8x20
16	1	172-361-0410	Push plate	D70x12
17	1	097-122-0100	Return spring	D29.5x43
18	1	172-212-1710	Sliding Shaft	D16/20x125
19	1	186-490-0281	Signal Lamp Switch	M12x1.5
20	1	91201-12150	Seal ring	D12/18x1.5
21	1	141-812-0100	Control pin	D8/10x26
22	1	141-812-0000	Binding screw	M12x1.5/M18x1.5
23	1	91842-18243	Lock Nut	M18x1.5
24	1	91838-18010	Pressure ring	Ms DR/R 18x23
25	1	91838-18100	O-ring	Ø16x2.5
26	1	90873-10053	Plug screw	M10x1, Allen head
27	2	90871-22193	Plug screw	1 pc since serial No. 02040, 7/2000
28	2	91201-22150	Seal ring	1 pc since serial No. 02040, 7/2000
29	16	90303-12308	Hex Screw	M12x30
30	2	90604-10201	Cotter Pin	D10x20
31	1	144-221-0600	Diff. Carrier Cover	Without Pressure Lubrication
32	1	91744-00704	T. Roller bearing	
33	1	146-167-1000	Oil Plate	Up to ser. No. 61919 (8/96)
33	1	546-167-1101	Oil Plate	Supersedes: 146-167-1010 ja 546-167-1100
34	2	90303-08203	Hex Screw	1 piece up to ser. No. 61919 (8/96)
35	2	133-348-1701	Sliding shoe	
36	1	144-751-1300	Control fork	
37	1	90313-08208	Allen Screw	M8x20
38	1	144-274-0710	Sliding ring	
39	1	144-251-3300	Intermediate Shaft	
40	1	144-282-0013	Thrust washer	D64/99x6
41	1	144-269-0600	Gear Assembly	
42	1	91738-40621	Needle bush	
43	4	143-345-0400	Thrust washer	D29/65x1.5
44	4	143-341-0700	Pinion gear	
45	1	143-310-3611	Diff. case assy	
46	1	143-331-1900	Spider	
47	8	90301-12703	Hex Screw	M12x70
48	1	91711-05600	Retainer ring	D56x2
49	ar	90731-03510	Shim	(0.1 mm)
49	ar	90731-03520	Shim	(0.2 mm)
49	ar	90731-03550	Shim	(0.5 mm)
49	ar	90732-03510	Shim	(1.0 mm)
50	1	91744-00351	T. Roller bearing	



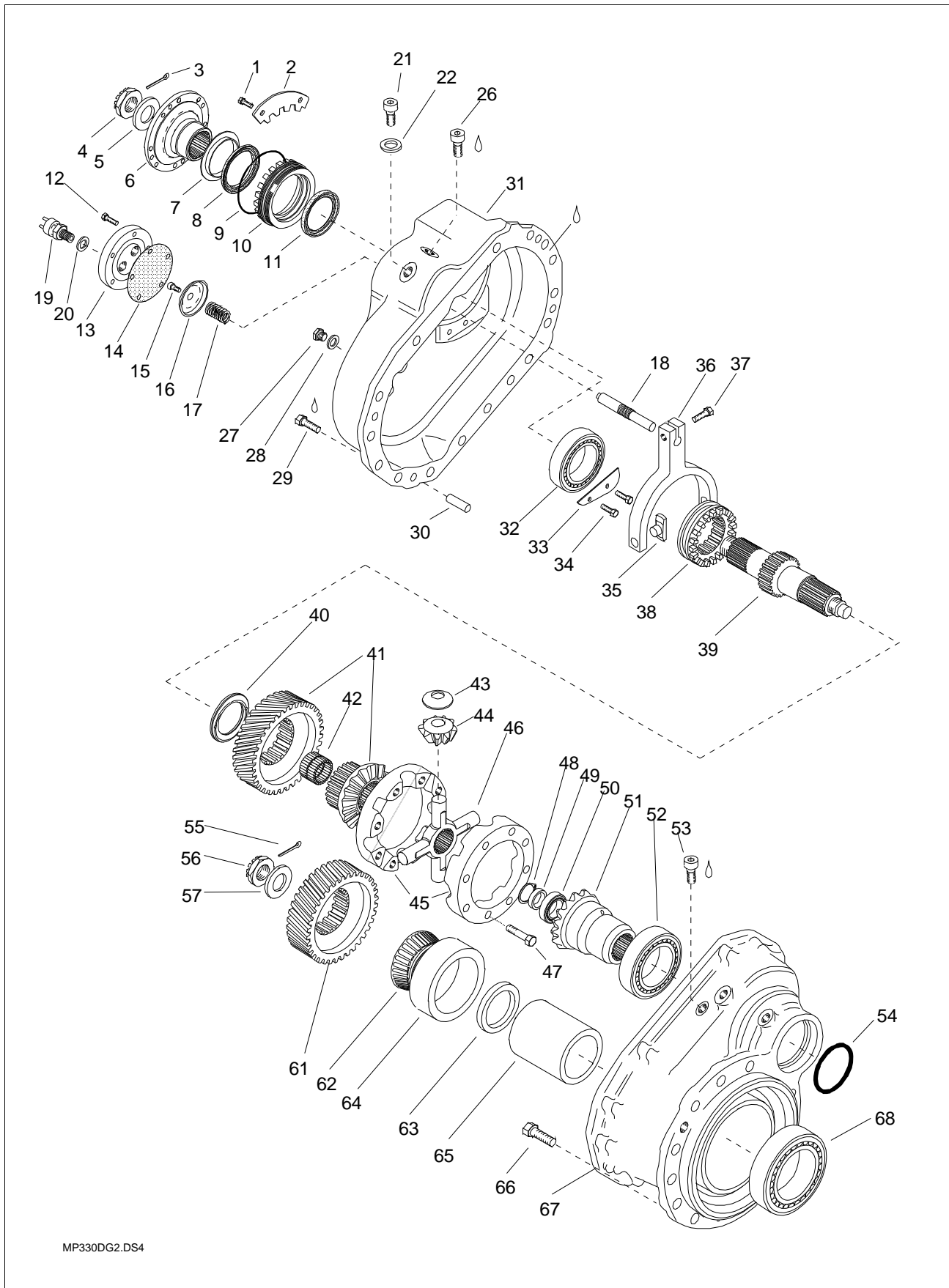
BTTM_VE2.DS4

Item	Qty.	Order no.	Description	Note
51	1	143-351-3700	Side gear	
52	1	91744-00951	T. Roller bearing	
53	1	90873-10053	Plug screw	M10x1, Allen head
54	1	591106-99532	O-ring	D99.5x3
55	1	90621-63633	Split pin	D6.3x63
56	1	90546-42653	Nut	M42x1.5
57	1	90705-43069	washer	D43/80x6
58	3	90318-08163	Screw	Up to ser. No. 61919 (8/96)
59	3	90705-08423	washer	Up to ser. No. 61919 (8/96)
60	1	146-167-0910	Oil trough	Up to ser. No. 61919 (8/96)
61	1	144-261-1900	Gear	
62	1	090-110-6740	Bearing inner race	
63	ar	099-516-7000	Shim	(0.1 mm)
63	ar	099-516-7001	Shim	(0.3 mm)
63	ar	099-516-7002	Shim	(0.5 mm)
63	ar	099-516-7003	Shim	(0.25 mm)
64	1	090-121-3700	Bearing outer race	
65	ar	143-261-0700	Spacer ring	L=94.20 mm
65	ar	143-261-0701	Spacer ring	L=94.15 mm
65	ar	143-261-0702	Spacer ring	L=94.18 mm
65	ar	143-261-0703	Spacer ring	L=94.12 mm
66	12	90303-16407	Hex Screw	M16x40, 10.9
67	1	144-211-1300	Diff. Carrier Housing	
68	1	91744-00681	T. Roller bearing	



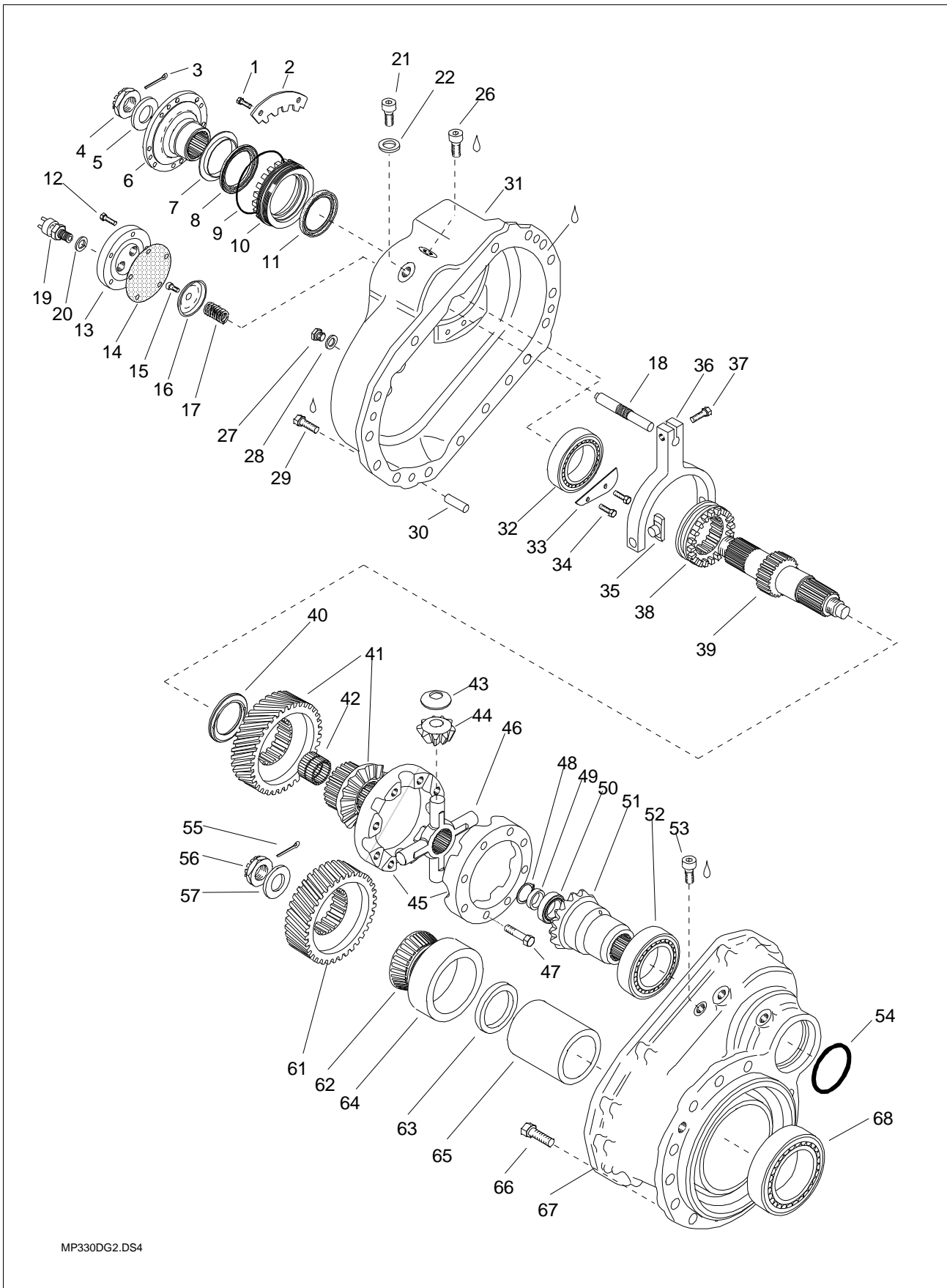
TDM2-VE1.DS4

Item	Qty.	Order no.	Description	Note
1	1	144-210-1911	Differential Carrier	Inc. Bearing Case Halfs and Bolts
2	ar	144-239-2000	Shim	(1.0 mm)
2	ar	144-239-2001	Shim	(0.5 mm)
2	ar	144-239-2002	Shim	(0.2 mm)
2	ar	144-239-2003	Shim	(0.1 mm)
3	1	591600-20823	Name plate	
4	4	90111-29054	Rivet	D2.9x5
5	4	590604-08141	Pin	8x14
6	2	143-214-2180	Bearing Case Half	Not Serviced Separately
7	4	90301-20377	Hex Screw	M20x130
8	4	90303-08103	Hex Screw	M8x10
9	2	143-227-0610	Lock plate	
10	2	143-226-0012	Adjusting nut	D149
11	2	090-121-4700	Bearing outer race	
12	2	090-110-9000	Bearing inner race	
13	1	543-240-6119	Ring and pinion gear set	14/27, FR 7.01
13	1	543-240-6129	Ring and pinion gear set	16/28, FR 6.36
13	1	543-240-6151	Ring and pinion gear set	12/29, FR 8.79
13	1	543-240-6181	Ring and pinion gear set	10/29, FR 10.55
13	1	543-240-6289	Ring and pinion gear set	13/34, FR 9.51
14	12	90321-16538	Hex Screw	M16x1.5
15	1	144-341-1700	Sliding Gear	
16	1	090-359-7000	Thrust washer	D97/127x3
17	1	143-310-3811	Diff. case assy	
18	1	543-351-4310	Side gear	D55/Z26
19	4	143-341-0700	Pinion gear	
20	4	143-345-0400	Thrust washer	D29/65x1.5
21	1	143-331-0603	Spider	
22	1	543-351-4210	Side gear	D55/Z26
23	1	090-357-5000	Thrust washer	D75/111x3
24	12	90556-16247	Nut	M16x1.5
25	5	90303-08203	Hex Screw	M8x20
26	1	572-161-1502	Membrane cover	For Signal Lamp Switch
27	1	172-351-1202	Membrane	
28	1	90319-08206	Screw	M8x20
29	1	172-361-0410	Push plate	
30	1	097-122-0100	Return spring	
31	1	172-212-1710	Sliding Shaft	
32	1	144-751-1210	Control fork	
33	1	90313-06208	Allen Screw	M6x20
34	2	133-348-0710	Sliding shoe	
35	1	90335-05108	Stopping screw	M5x10
36	1	91711-06500	Retainer ring	D65
37	1	144-348-0000	Sliding ring	
38	1	586-490-0381	Signal Lamp Switch	M18x1.5
39	1	91201-18150	Seal ring	D18/22x1.5 Cu



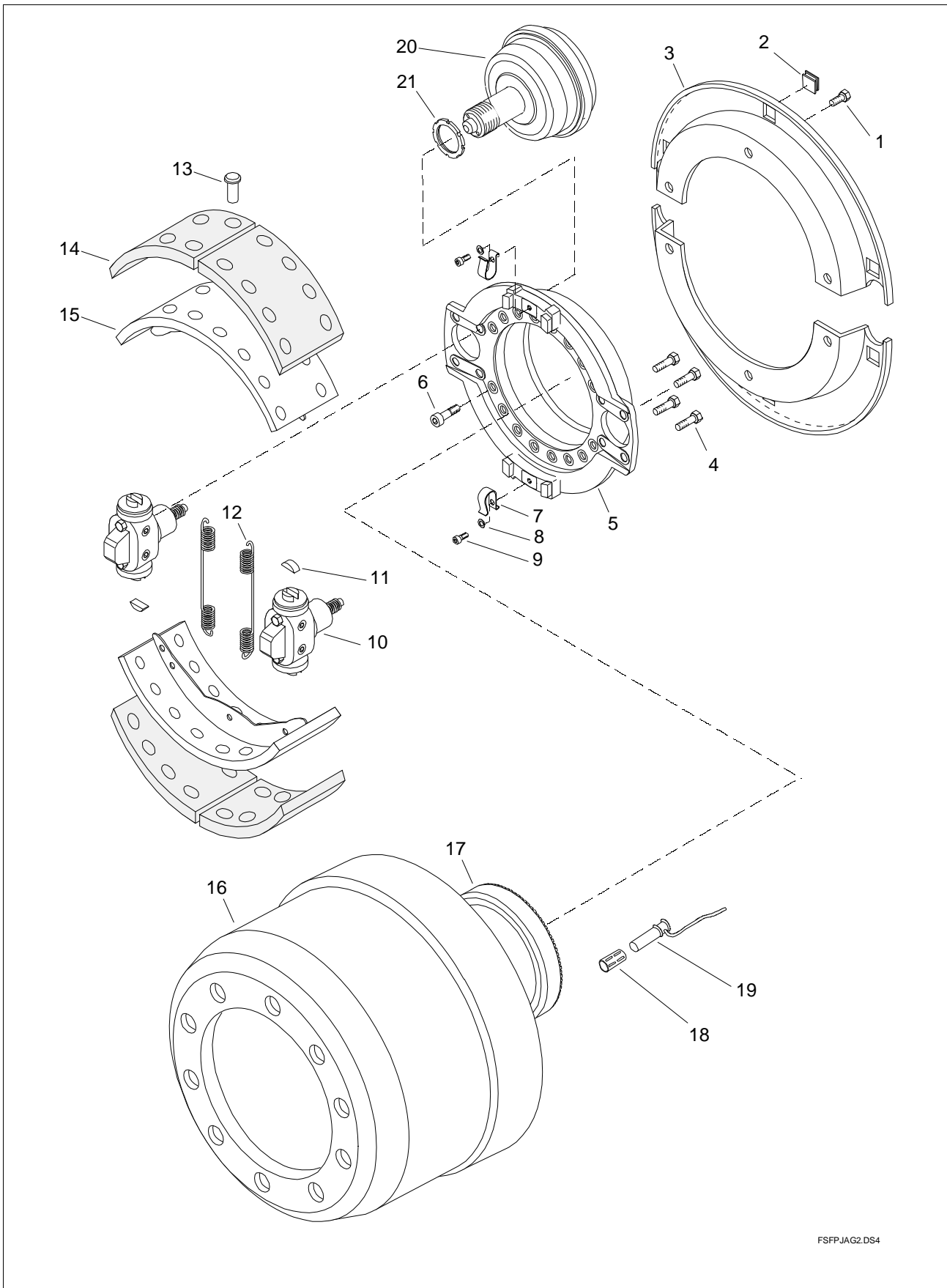
MP330DG2.DS4

Item	Qty.	Order no.	Description	Note
1	2	90303-08203	Hex Screw	M8x20
2	1	143-227-0710	Lock plate	
3	1	90621-63633	Split pin	6.3x63
4	1	90546-42653	Nut	M42x1.5
5	1	90705-43069	washer	D43/80x6
6	1	138-918-0400	Flange	HS1700-1800, S/N 143556 only
6	1	138-918-0401	Flange	ISO 8667 - T180, S/N 143556 only
6	1	538-918-1610	Flange	HS 1700/1800, for cassette seal
6	1	538-918-1611	Flange	ISO 8667-T180, for cassette seal
7	1	090-711-9010	Shield	S/N 143556 only
8	1	090-400-9500	V-ring	VS-95, S/N 143556 only
8	1	591122-08507	Shaft seal	Cassette seal D85/120x9/20
9	1	91101-39530	O-ring	D139.5x3
10	1	143-226-1200	Adjusting nut	S/N 143556 only
10	1	543-226-1400	Adjusting nut	For cassette seal
11	1	91122-08505	Shaft seal	D85/105x10, S/N 143556 only
12	5	90303-08203	Hex Screw	M8x20
13	1	572-161-1502	Membrane cover	
14	1	172-351-1202	Membrane	
15	1	90319-08206	Screw	M8x20
16	1	172-361-0410	Push plate	
17	1	097-122-0100	Return spring	
18	1	172-212-1710	Sliding Shaft	
19	1	586-490-0381	Signal Lamp Switch	M18x1.5
20	1	91201-18150	Seal ring	D18/22x1.5 Cu
21	1	90871-18173	Plug screw	M18x1.5
22	1	91201-18150	Seal ring	D18/22x1.5 Cu
26	1	90873-10053	Plug screw	M10x1, Allen head
27	1	90871-22193	Plug screw	M22x1.5, hex head
28	1	91201-22150	Seal ring	D22/27x1.5 Cu
29	16	90303-12308	Hex Screw	M12x30
30	2	90604-10201	Cotter Pin	D10x20
31	1	144-221-0600	Diff. Carrier Cover	
32	1	91744-00704	T. Roller bearing	
33	1	546-167-1101	Oil Plate	
34	2	90303-08203	Hex Screw	M8x20
35	2	133-348-1701	Sliding shoe	
36	1	144-751-1300	Control fork	
37	1	90313-08208	Allen Screw	M8x20
38	1	544-274-0910	Sliding Ring	
39	1	144-251-3300	Intermediate Shaft	



MP330DG2.DS4

Item	Qty.	Order no.	Description	Note
40	1	144-282-0013	Thrust washer	D64/99x6
41	1	544-269-1610	Gear assembly	Z28
42	1	91738-40621	Needle bush	
43	4	143-345-0400	Thrust washer	D29/65x1.5
44	4	143-341-0700	Pinion gear	
45	1	143-310-3611	Diff. case assy	
46	1	143-331-1900	Spider	
47	8	90301-12703	Hex Screw	M12x70
48	1	91711-05600	Retainer ring	D56x2
49	ar	90731-03510	Shim	(0.1 mm)
49	ar	90731-03520	Shim	(0.2 mm)
49	ar	90731-03550	Shim	(0.5 mm)
49	ar	90732-03510	Shim	(1.0 mm)
50	1	91744-00351	T. Roller bearing	
51	1	143-351-3700	Side gear	
52	1	91744-00951	T. Roller bearing	
53	1	90873-10053	Plug screw	M10x1, Allen head
54	1	591106-99532	O-ring	D99.5x3
55	1	90621-63633	Split pin	6.3x63
56	1	90546-42653	Nut	M42x1.5
57	1	90705-43069	washer	D43/80x6
61	1	544-261-3010	Gear	Z28
62	1	591744-10754	Bearing inner race	
63	ar	590731-07510	Shim	s=0.10 mm
63	ar	590731-07530	Shim	s=0.30 mm
63	ar	590731-07550	Shim	s=0.50 mm
64	1	591744-21451	Bearing outer race	
65	ar	543-261-1300	Spacer ring	L=89.00 mm
65	ar	543-261-1301	Spacer ring	L=89.02 mm
65	ar	543-261-1302	Spacer ring	L=89.05 mm
65	ar	543-261-1303	Spacer ring	L=89.08 mm
66	12	90303-16407	Hex Screw	M16x40, 10.9
67	1	544-211-1900	Diff. Carrier Housing	
68	1	591744-00760	T. Roller bearing	



FSFPJAG2.DS4

Item	Qty.	Order no.	Description	Note
1	12	90313-08123	Allen Screw	M8x12
1	12	90705-08423	washer	D8.4/17x1.6
2	12	591426-02000	Plug	
3	4	546-131-7011	Dust Shield	
4	16	590316-14358	Screw	Not serviced separately
4	16	590707-14223	washer	Not serviced separately
5	2	546-111-3601	Brake Bracket	
6	32	90311-16608	Allen Screw	M16x60
7	4	546-817-0010	Bracket	Including pos. 8 & 9, Not serviced separately
8	4	590710-10547	washer	Not serviced separately
9	4	590317-10163	Hex Screw	Not serviced separately
10	2	546-011-0011	Expander	RH, Including pos. 4
10	2	546-011-0021	Expander	LH, Including pos. 4
11	4	546-358-0300	Sliding shoe	
12	ar	546-099-0001	Repair kit of springs	For two wheels (inc. 7-9,12)
12	4	592052-24002	Return spring	Not serviced separately
13	96	591501-00991	Rivet	Not serviced separately
14	ar	546-360-2111	Brake lining set	200 mm, For two wheels, including rivets
14	ar	546-360-2121	Br. lining set(over size)	200 mm, For two wheels, including rivets
15	4	546-309-9811	Brake shoe assy	200 mm, Complete with linings
16	2	546-311-8111	Brake drum	Supersession for 146-311-7210 & 546-311-8200
17	2	589-291-0300	Ring gear	ABS
18	2	189-295-0000	Bush	ABS
19	2	189-250-0071	Sensor	ABS, Wabco
19	2	589-250-0081	Sensor	ABS, Knorr, protected wire
20	4	572-101-2271	Brake chamber	20", for wedge brake
20	4	572-101-2281	Brake chamber	18", for wedge brake
20	4	572-101-2312	Brake chamber	12", for wedge brake
21	0	599-246-9010	Lock Nut	Superceded by item 599-246-9100
21	4	599-246-9100	Lock Nut	1.75-12 UNS